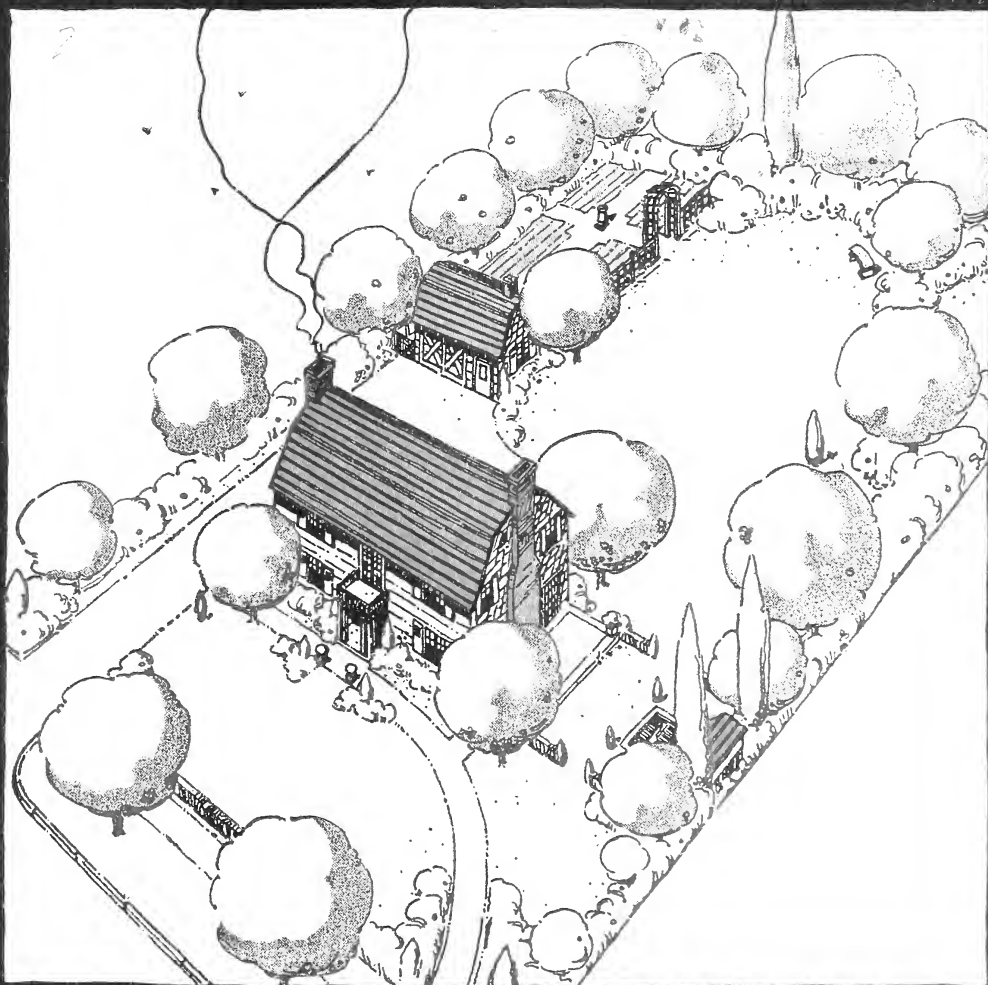


## **Historic, archived document**

Do not assume content reflects current scientific knowledge, policies, or practices.



# FOR THE IMPROVEMENT of your HOME GROUNDS



ROSE HILL NURSERY  
MINNEAPOLIS                      SAINT PAUL

Established 1874



## ANNOUNCEMENT

This catalog marks an event—the completion of our fiftieth year. The public may not be vitally interested in the fact of our continuous existence thru this period. Nevertheless there is an impressive significance in our having a background of a half century of faithful service to point to.

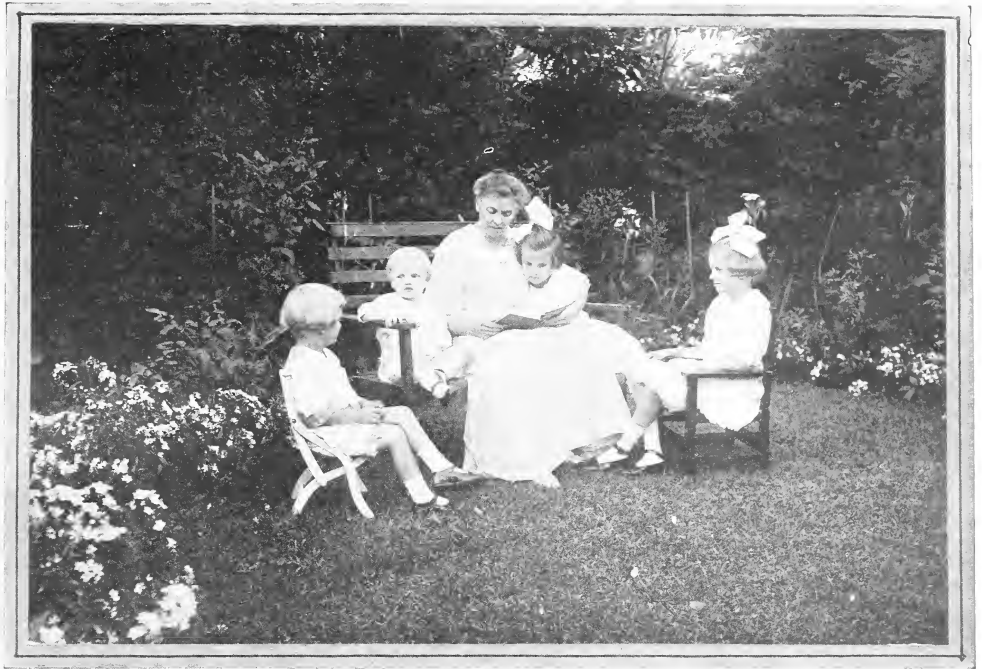
This business has been builded upon ideals—and in the pursuance of these ideals we have handled only the very best of stock and have given careful, prompt and generous attention to the needs of our customers. The result has been business success.

What this means to you is simply this. In our long experience we have acquired an exceptional understanding of our customers' needs, of the success or failure of varieties under differing soil and climatic conditions. In short, we bring to you the cumulative experience and efficiency of a permanent and successful business.

## IN APPRECIATION

This is a fitting time to express to the thousands of patrons of the past nursery year our sincere appreciation of their confidence and patronage. We pledge to one and all a continuance of the service it has been our privilege to render in the past.

You may place your planting problems in our hands with a feeling of security and the knowledge that they will command on our part a whole-hearted desire to be of valuable service. We value our customers and the progress we have made during the past has been directly inspired by an appreciation of the patronage given us and the desire to serve our customers to the full measure of our ability.



## THE JOY OF LIVING OUT OF DOORS

*There is an incomparable joy in living in the out of doors amid the beauties of a well designed garden. We have been building such gardens for a half century.*



HEREVER there is a garden there will be found a home rich in contentment. The beauty and mystery of flowers never palls on our fancy from childhood to old age. Nursery rhymes, children's stories, nature, poetry and literature abound with praise of flowers. They inspire the expression of the finest emotions of which we are capable.

Children who grow up amid flowers are notably happy in spirit, discerning and imaginative. The precious instinct to surround themselves with simple beauty is fostered, and when

they grow up and build their homes this instinct finds expression in many ways. The moral and spiritual effect of flowers on character in the molding is incalculable.

"Grown-ups" feel the spell of a garden in no less degree. We have heard people tell repeatedly of the fascination of their gardens—how their first thought upon waking in the morning is to look out of the window and thrill with pleasure at the loveliness of the garden. When this happiness may be had for six to eight months of the year, it surely is of great worth.



# HOW TO REACH US



## An Invitation

We invite you to visit our Nursery during the summer months, from June until September, to see the large blocks of vigorous stock which we are growing, and to become acquainted with the numerous varieties of plants, their foliage, blossoms, fruits and habits of growth.

Such a visit will impress upon you the consistently high quality of ROSE HILL products.

*John Hawkins*  
Proprietor

## HOW TO ORDER

Our aim in handling any order, large or small, is to satisfy our customers. To do this it is necessary to furnish quality goods, deliver the order promptly, avoiding at all times errors of address, routing, packing, etc.

With your cooperation it will be possible for us to make your dealings with us a pleasure to you.

### ORDER EARLY

The order that is sent as early as possible will receive the most prompt attention. The customer outside of the Twin Cities should give plain directions as to name, address, and the route by which shipment should be made.

### ALL ORDERS CAREFULLY PACKED

We pack our shipments in the most careful manner and make no charges for packing, boxing or delivering to railroad or express offices. The railroad or express companies may be held

strictly accountable for any damage to the shipment in transit.

### REGARDING ADJUSTMENTS

Any errors in filling orders will be cheerfully corrected. Examine your goods upon their receipt and report at once should there be any cause for complaint. Claims made after ten days from receipt of goods will not be allowed. Twin City orders are delivered free providing they amount to \$2.00 or more; otherwise a charge of 50 cents is made to cover cost of delivering.

### OUR GUARANTEE

We warrant all stock sent out by us to be healthy, true to name and as represented in this catalog. Should any stock not prove true to name we will replace with the genuine or refund the purchase money, but are not liable for further damages.



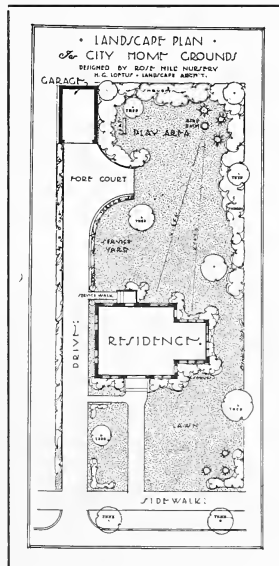
## OUR LANDSCAPE DEPARTMENT

**I**N ORDER to obtain the full return of value from your investment in trees, shrubs, etc., give due consideration to the correct placing of each tree and shrub in its relation to the house or other buildings, to views which are desirable or unsightly, to shade, etc.

This involves a definite plan, which, if carefully worked out, will assure results that are highly profitable as well as gratifying from the standpoint of beauty. Property values definitely reflect the worth of attractive planting.

Landscape gardening is a highly developed art. Thru its application, unsuspected beauties of a property are brought into display. This is just as true of the small and modest property as it is of the larger and more pretentious. As the plantings grow into maturity thru the seasons, the results are satisfying in a big way.

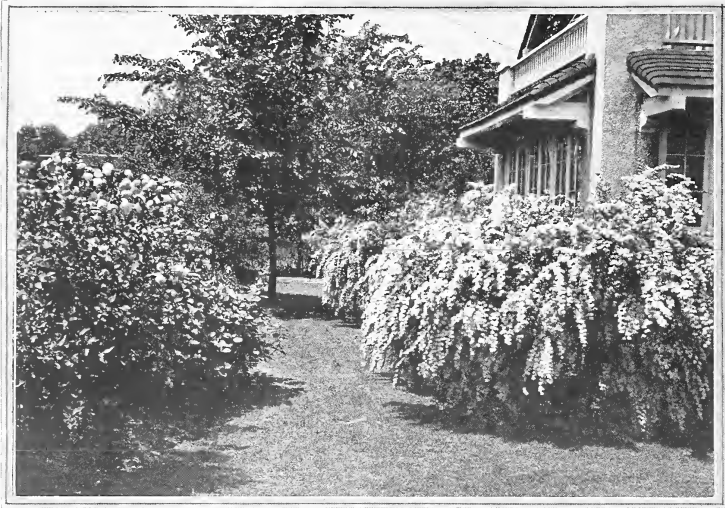
We offer our customers an unequalled landscape service under the supervision of men whose good judgment and good taste founded on practical knowledge and experience enables them to assist you in the development of your homegrounds so as to obtain immediate results and permanent satisfaction.



A LANDSCAPE PLAN  
MADE BY OUR LANDSCAPE DEPARTMENT

Consult with us. No matter how extensive or how small your problem, we can develop a planting plan for you that will be a source of pleasure thru the years. The illustration at the center of the page is a typical planting plan. It analyzes the possibilities of the home place and makes of it a beauty spot of which the owner may well be proud.

On the inside back cover of this catalogue you will find a number of typical planting problems. These will assist you in making selections of plats for foundation plantings and plantings for other purposes.



## ORNAMENTAL SHRUBS

**N**ATURE has been very generous in giving us a great variety of shrubs, some useful as decorative plants, some for cut flowers, while others for their bright colored berries that remain on the bush most of the winter. By the judicious selection of varieties a succession of bloom may be had from early spring until late fall. Shrubs for best results should not be scattered about the lawn, but massed in irregular groups against the buildings, in the corners, at the back and sides of the lawn for broad areas of light and shade are necessary for best results.

We catalog only hardy reliable shrubs for our severe climate. We grow our own shrubs and know from experience what kinds are desirable and hardy.

We have one of the largest stocks of exceptionally fine shrubs in the Northwest. Our growing season the past year has been favorable, and under thorough cultivation we have been able to produce as fine shrubs as can be grown anywhere.

**ALMOND, FLOWERING** (*Prunus Japonica*). A shrub of erect habit, growing to a height of three to four feet. Flowers very double, blooms in May. We have them in either pink or white. Plant in protected locations.

**ARROWWOOD** (*Viburnum Dentatum*). An upright bushy shrub with bright green foliage which colors prettily in the fall. Flowers white, followed by steel blue berries in the fall.

**BARBERRY, THUNBERG'S** (*Berberis Thunbergii*). This pretty dwarf shrub is used more than any other in ornamental plantings. It is remarkable for its dense spreading growth and attractive appearance throughout the year. One of the earliest to start in the spring. Before most other plants have awakened from their winter sleep it is covered with the greenness of its dainty little leaves and a few weeks later with myriads

of small pale yellow flowers, followed by an abundant crop of fruit, ripening into scarlet berries which remain to make the bush a conspicuous and attractive object during the winter. The brilliant autumn coloring of the leaves, which assume the brightest shades of orange, scarlet and crimson, is not the least of the attractions of this interesting shrub. It is one of the best plants for shrubbery borders, for edging and hedges. This variety should not be confused with the purple or green leaved barberries. They have been discarded as they harbor one stage of the wheat rust spore.

**BUCKHORN** (*Rhamnus Catharticus*). A very hardy shrub with small white flowers in June, and glossy green foliage. For further description, see ornamental hedges.

**BUFFALO BERRY** (*Shepherdia Argentea*). A large-growing shrub with silvery white foliage. The fruit is red, resembling a currant.



PATH LEADING TO OUR OFFICE

*It's Not a Home - - Until It's Planted*





**BURNING BUSH (*Euonymus Atropurpurea*).** A tall desirable shrub covered in the fall with bright red fruit, which opens and displays the seeds enclosed in their scarlet pulpy aril. Fruit hangs on until midwinter.

**BUTTERFLY BUSH (*Buddleia Variabilis*).** Sometimes called the summer lilac. The violet colored blossoms are borne in terminal panicles late in summer and one bush will often attract hundreds of butterflies. Fragrant and showy.

**BUTTON BUSH (*Cephalanthus Occidentalis*).** Ornamental shrub, with handsome glossy foliage and very attractive flower balls appearing late in the summer.

**CARAGANA or PEA TREE (*Caragana Arborescens*).** One of our hardiest desirable shrubs. During early May the bush is covered with bright yellow, pea-shaped flowers, followed by long, slender pods. Pretty as a lawn shrub or for hedges. This shrub is especially valuable in dry locations and where soil conditions are not the most favorable.

**CHERRY, SAND (*Prunus Pumila*).** Its small, but numerous blossoms and purple black fruit make it an attractive addition to the shrubby border.

**COTONEASTER or QUINCE BERRY.** An attractive, beautifully formed shrub with thick glossy leaves turning red in the fall giving it the most attractive appearance. The flowers which appear during the early summer are followed by large black berries which remain on the bush nearly all winter.

**CRAB, BECHTEL'S DOUBLE FLOWERING (*Pyrus Angustifolia*).** A beautiful large-growing shrub or small tree with double, beautiful, fragrant flowers of a delicate pink. Blooms in the early spring.

**CRANBERRY, HIGH-BUSH (*Viburnum Opulus*).** Handsome, native shrub. Flowers white in flat clusters. Very decorative in fruit which begins to color by the end of July, remaining on the branches and keeping its bright scarlet color until the following spring. Ornamental as well as useful. Fruit may be used as a substitute for marsh cranberries. A large growing shrub closely allied to the Snowball.

**CURRANT, ALPINE or MOUNTAIN (*Ribes Alpinum*).** A most desirable low growing shrub. On account of retaining its foliage close to the ground it makes a desirable plant for shrubby borders. One of the best shrubs for shady places.

**CURRANT, YELLOW FLOWERING (*Ribes Aureum*).** Very hardy; has a great profusion of yellow fragrant flowers in spring and succeeds well in shady locations.

**DOGWOOD, ALTERNATE-LEAVED (*Cornus Alternifolia*).** Of very distinct habit, the branches being arranged in irregular whorls, forming flat horizontal tiers. Fruit a dark blue berry.

**DOGWOOD, GOLDEN BARKED (*Cornus Stolonifera Aurea*).** A variety with golden yellow bark, very attractive. Planted in masses with



THUNBERG'S BARBERRY

the red-barked varieties, an effective and striking contrast may be secured. It is perfectly hardy.

**DOGWOOD, RED TWIGGED (*Cornus Stolonifera*).** A hardy shrub with bright red bark in winter and flat clusters of white flowers in June. Desirable planted either singly or in groups with other shrubs.

**DOGWOOD, SIBERIAN (*Cornus Siberica*).** A variety far superior to our native Red Twigged Dogwood. Its habit of growth is more symmetrical, and the branches turn a brighter red in the winter. Makes a very pretty hedge.

**DOGWOOD, SIBERIAN VARIEGATED LEAVED (*Cornus Siberica Variegata*).** The finest variegated-leaved shrub, of rapid growth, and valuable to plant singly or in groups. The leaves are broadly and distinctly variegated white and green.

**ELDER, BLACK BERRIED (*Sambucus Canadensis*).** A large rapid growing shrub with immense flat clusters of white blossoms in June and early July, followed by black berries which are often used for pies and wine.

**ELDER, CUT-LEAVED (*Sambucus Canadensis Laciniata*).** A strong grower, with elegantly divided foliage; does well in shady locations.

**ELDER, GOLDEN-LEAVED (*Sambucus Nigra Aurea*).** A beautiful rapid growing shrub, with light yellow leaves which hold their color well and render the plant very conspicuous and effective, especially toward autumn, when the leaves turn a bright golden color.

**ELDER, RED BERRIED (*Sambucus Racemosa*).** Blossoms white produced in great profusion in early May, followed by bunches of red berries. Bush vigorous and hardy.

**FORSYTHIA, FORTUNE'S GOLDEN BELL (*Forsythia Fortunei*).** An upright spreading bush with handsome pendulous trumpet shaped bright yellow blossoms produced in the early spring. Foliage deep shining green. Half hardy.



DOUBLE FLOWERING PLUM



**HERCULES CLUB or DEVIL'S WALKING STICK** (*Aralia Spinosa*). Attractive shrub with very prickly stems and large, deeply cut leaves. Immense panicles of white flowers in August.

**HONEYSUCKLE, MORROW'S** (*Lonicera Morrowi*). A symmetrical shrub having slender drooping branches. The cream white flowers produced in May are followed by bright red berries during the latter part of the summer. The foliage remains perfectly green after most all other Honeysuckles have shed their leaves.

**HONEYSUCKLE, TARTARIAN** (*Lonicera Tartarica*). One of our most popular ornamental shrubs. Very hardy, large growing, easily transplanted and does well in any soil. It has fine luxuriant foliage and the delicate flowers, while small, are profusely produced in pleasing colors. Followed by attractive red or yellow berries. Does not need much pruning and is long-lived. We have them in pink, red or white.

**HYDRANGEA, HARDY** (*Hydrangea Paniculata Grandiflora*). This is one of the most valuable shrubs in cultivation. Medium sized with fine large foliage and immense trusses of white flowers changing to pink and finally reddish brown. Flowers over one foot in length, produced in August and September when few other shrubs are in bloom. The bushes transplant very easily and are sure to bloom the same year as set out, often having a dozen or more immense flowers. A single specimen planted on a lawn makes a very conspicuous shrub; but when a group of a dozen are planted together the effect is wonderful. The bushes should be pruned back severely each spring in order to get nice, large flowers. See cut.

**HYDRANGEA, HILLS OF SNOW** (*Hydrangea Arborescens Grandiflora*), or **SNOWBALL HYDRANGEA**. A new valuable shrub with large snow-white blossoms of immense size. The habit of the plant is excellent, the foliage finely finished. Commences to bloom in June and continues until early fall. Coming into bloom at a season when most shrubs are through flowering, makes it a valuable acquisition in any garden. Recommended as one of our best shrubs.



HARDY HYDRANGEA

**HYDRANGEA, TREE FORM.** We offer an especially fine stock of these, trained to a straight stem to produce a small tree for ornamental planting. Grown in this way they make very striking specimens and are particularly adapted to use on small lawns. Should be supported with a stake until trunk becomes heavy enough to hold up the head.

**JUNEBERRY** (*Amelanchier*). One of the most beautiful flowering shrubs; every stem and branch is a solid mass of delicate feathery whiteness. Fruit resembles bluet berries both in appearance and taste.



AN ATTRACTIVE GARDEN SETTING, ALPINE CURRANT HEDGE IN FOREGROUND



**LILAC, COMMON PURPLE.** A very hardy, beautiful, large growing shrub with purple flowers in May. Indispensable in every collection of shrubs. Often used for hedges.

**LILAC, COMMON WHITE.** Of rapid growth, with large shining foliage. Produces large clusters of fragrant flowers.

**LILAC, JAPAN TREE.** A vigorous grower that forms a medium sized tree, and blooms in loose spreading clusters of creamy white flowers. The flowers are produced in June, after other Lilacs are through blossoming.

**LILAC, JOSIKEA.** A distinct sort, of tree-like habit, producing purple flowers in June when most other Lilacs have ceased blooming.

**LILAC, PERSIAN.** A more graceful form than other varieties of Lilac. The branches are slender, leaves finer and more pointed. The flowers are purple, very fragrant and borne in large panicles. An excellent shrub for planting at house corners.

**LILAC, ROTHOMAGENSIS PERSIAN.** A grand improvement on the common Persian Lilac. The flowers are larger and of a reddish purple color, produced in such great profusion as to almost bend the bush to the ground. Very fragrant. Bushes three feet high standing in our nursery last summer had from ten to twenty large blossoms.

**LILAC, VILLOSA.** Bushy shrub about eight feet high, with rather stout branches. It has dark, shining, heart-shaped foliage which makes this Lilac desirable even when not in bloom. Flowers are silvery rose and produced in great profusion in May and June. A grand distinct type, very satisfactory.

**LILAC, BELLE DE NANCY.** Satiny rose, white center.

**LILAC, CHAS. X.** Very hardy. This variety is a grand improvement on the common purple. Blooms a little later, flowers of a reddish purple color, one-half larger and twice as abundant. The best purple lilac. See cut.

**LILAC, LUDWIG SPAETH.** Deep purplish red flowers in dense, large panicles.

**LILAC, MADAME LEMOINE.** Undoubtedly one of the best profuse blooming double white Lilacs. Invest in this and you will not be sorry.

**LILAC, MARIE LE GRAY.** Large panicles of single white flowers. One of the finest and best blooming sorts. No collection of Lilacs should be without this grand variety.

**LILAC, PRESIDENT GREVY.** One of the new desirable Lilacs, producing large double rose colored flowers.

**OLIVE, RUSSIAN (Elaeagnus Angustifolia).** A large growing shrub or small tree with silvery white foliage. One of the best for planting in dry, exposed locations.

**POTENTILLA FRUITICOSA.** A handsome and distinct low growing shrub, with numerous bright yellow flowers throughout the summer.



CHARLES X LILAC

**PLUM, DOUBLE FLOWERING (Prunus Triloba).** An interesting shrub of medium height, bearing early in May, a profusion of delicate pink-rose-like blossoms appearing just before the leaves unfold. Flowers resemble the Flowering Almond, but the bush is hardier and gives better satisfaction. Without doubt one of the prettiest shrubs we have. See cut.

**PLUM, PURPLE LEAVED.** Large shrub or small tree used to color up the shrub plantings. Its shining, purple leaves, which hold their color well during the summer, add a color note which easily takes the place of the purple barberry which can no longer be used.

**ROSE ACACIA (Robinia Hispidal).** Attractive shrub for border or hillside planting, branchlets thickly covered with short bristles, small compound leaves, flowers

poor-shaped, rose-colored or pale purple. Thrives in poor soil.

**ROSA RUGOSA, SINGLE RED.** Perfectly hardy, even on the most exposed locations, thrives in any kind of soil and needs no winter protection. One of the most ornamental single flowered roses and one of the most popular for massing for hedges or shrubbery groups. It is a shrub of more than ordinary attractiveness at all seasons of the year, whether seen in its shining green summer dress of crinkled leaves or when adorned with its numerous waxy red flowers, which bloom nearly all summer, or when loaded with its conspicuous scarlet fruit, or in the brilliancy of its autumnal coloring of orange and scarlet, or in the winter when the densely thorny stems are exposed in all their fierceness.



WHITE SNOWBERRY



**ROSA RUGOSA, DOUBLE RED.** A valuable shrub resembling the single Rosa Rugosa in habit of growth and hardiness. The flowers are double, sweet scented, and produced from June until the latter part of October.

**ROSA RUGOSA ALBA, DOUBLE WHITE.** Produces a fine, double sweet and pure white blossom, borne in clusters of from five to ten. Hardy and desirable.

**ROSA, BLANDA.** Rosy pink, single flowers in great abundance during early summer. Its red stems and seed hips are very attractive during winter.

**ROSE, RED-LEAVED (Rosa Rubrifolia).** A very striking, hardy rose on account of its reddish foliage. Flowers single and pink.

**SNOWBALL (Viburnum Opulus Sterilis).** A well-known and favorite shrub of large size, attaining a height of eight to twelve feet. Flowers pure white, in globular clusters, about the first of June; valuable for decorating.

**SNOWBALL, TREE SHAPED.** Same variety as above trained in tree shape.

**SNOWBERRY, RED, or INDIAN CURRANT (Symphoricarpus Vulgaris).** Of low growing and graceful habit, with numerous small pink flowers during the summer, followed by bright red berries, literally covering the branches, remaining nearly all winter.

**SNOWBERRY, WHITE (Symphoricarpus Racemosus).** A rather low growing shrub with small pink flowers, followed by white berries which hang on until winter. When planted near or among the Cranberry, a very pleasing effect is produced during the fall and early winter, one having white berries and the other red. See cut.

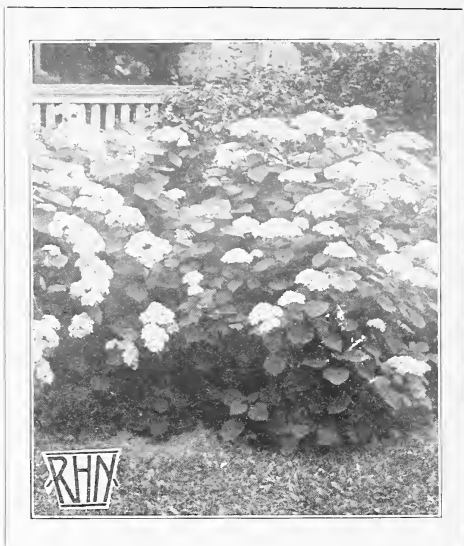
**SPIREA, ANTHONY WATERER.** A valuable and distinct variety growing about two feet high. Flowers a bright crimson, commencing to bloom in June and continuing through the summer and fall. Where a low growing shrub is desired no other variety will produce such an abundance of showy flowers and give such general satisfaction. Sure to bloom the first season.

**SPIREA ARGUTA.** A very graceful early flowering shrub coming into blossom 2 or 3 weeks before the Bridal Wreath. The slender arching branches are clothed with feathery bright green leaves. The blossoms are small and white, completely covering the bush.

**SPIREA, ASH-LEAVED (Spirea Sorbifolia).** A pretty, vigorous shrub with long, elegant panicles of white flowers in July. Leaves large, compound, resembling those of the Mountain Ash. Starts growth before the frost is entirely out of the ground. Does well either in a sunny or shady location.

**SPIREA, BILLARDI ROSEA.** A fine Spirea with panicles of rose-colored flowers, beginning to bloom the latter part of June and blooming occasionally all summer. Sometimes kills back a little, but blooms just as freely the following year.

**SPIREA, BRIDAL WREATH (Spirea Van Houttei).** The grandest of all Spireas, and as desirable as any shrub in cultivation. Flowers about an inch in diameter, white, flat; produced so freely along the drooping stems that the foliage can hardly be seen. Blossoms in early part of June. See cut.



HILLS OF SNOW—HYDRANGEA

**SPIREA, BUMALDA.** A dwarf shrub producing flat clusters of light rose blossoms, remaining in bloom nearly all summer.

**SPIREA, CALLOSA ALBA.** Dwarf white Spirea of bushy symmetrical form. Keeps in flowers nearly all summer. A valuable small shrub.

**SPIREA, CALLOSA ROSEA.** A dwarf bush with flat clusters of pink flowers. Blooms in July, continuing to some extent until fall. Very often kills back to the ground, but soon grows up and blooms just as freely each year. Very desirable where a dwarf shrub is wanted.

**SPIREA, FROEBELI.** Flowers bright rosy-red in flat clusters, produced during July and August. This is one of our finest Spireas, excellent as a border shrub. Foliage turns purple in the fall. Branches willowy. Should be in every garden.

**SPIREA, GOLDEN-LEAVED (Spirea Opulifolia Aurea).** A vigorous grower, attaining a height of six to eight feet. Very desirable where a large growing beautiful shrub is wanted. The leaves are of a golden green color. White flowers in clusters about middle of June.

**SPIREA, NINEBARK or SNOWBALL-LEAVED (Spirea Opulifolia).** A very vigorous grower, attains a height of six to eight feet, of spreading habit, large white flowers. It makes a good screen, leaves remaining on the plant the greater part of the winter.

**SPIREA, THUNBERG'S (Spirea Thunbergii).** A low-growing variety with fine, delicate, drooping foliage. The plant is entirely covered in the early spring with a profusion of wreaths of white flowers. The flowers appear with the leaves.



**SUMACH, AROMATIC (*Rhus Aromatica*).** A good cover plant for dry, rocky banks; conspicuous in early spring by its yellow flowers.

**SUMACH, SMOOTH (*Rhus Glabra*).** A native large growing shrub, well adapted for covering barren hills or unsightly banks where most shrubs will not thrive. Leaves turn a bright, fiery red in autumn.

**SUMACH, CUT-LEAVED (*Rhus Glabra Laciniata*).** A rare shrub of moderate size, with deeply cut leaflets, giving the whole shrub a fern-like appearance. The leaves turn a bright red in the autumn, making it a desirable shrub in the fall as well as during the summer.

**SUMACH, CUT-LEAVED STAGHORN (*Rhus Typhina Laciniata*).** A new shrub and one of the most beautiful plants in nature. It is of spreading habit, with large, long, finely cut, lace-like, wonderfully graceful leaves. The foliage is of a pleasing green, always healthy and clean and turns in autumn to varied hues of pink, crimson and gold. The effect, resembling as it does, soft lace, is one of elegance and beauty. See cut.

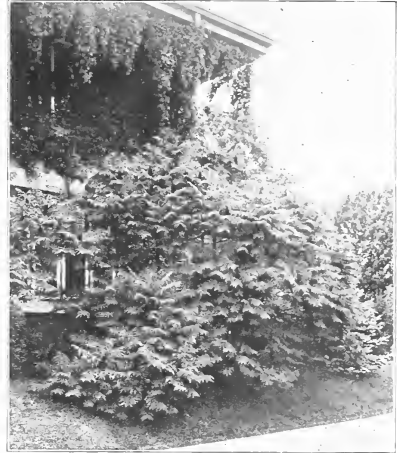
**SYRINGA, DWARF GOLDEN-LEAVED (*Philadelphus Folius Aureus*).** A compact shrub with bright yellow foliage, very effective as a foliage plant.

**SYRINGA, LARGE FLOWERED (*Philadelphus Grandiflorus*).** A large and vigorous growing shrub, producing a great wealth of creamy white blossoms of unusual size and fragrance.

**SYRINGA, LEMOINE (*Philadelphus Lemoinei*).** A showy and free-flowering variety with slender arching branches. Flowers creamy white and very fragrant.

**SYRINGA, SWEET SCENTED or MOCK ORANGE (*Philadelphus Coronarius*).** A vigorous growing shrub with sweet scented white flowers in the greatest profusion about the middle of June. Foliage bright and handsome.

**SYRINGA, VIRGINAL.** A magnificent new variety which is just coming into general notice. The bush grows moderately tall, with good foliage and compact



CUT-LEAVED SUMACH

habit. The double flowers are the largest, handsomest, and most sweetly fragrant of any known variety; each arching branch a wand of clustered beauty.

**TAMARIX (*Tamarix Amurensis*).** A distinct type of shrub having leaves somewhat like the Juniper. Valuable for planting with other shrubs. Should be protected in exposed locations.

**WAYFARING TREE (*Viburnum Lantana*).** Large, robust shrub, with soft heavy leaves and clusters of white flowers, followed by red fruit turning black. Retains its foliage late in the fall. A fine shrub.

**WEIGELIA, EVA RATHKE.** A remarkably free bloomer, flowering continuously throughout the summer, of an entirely distinct color, being a rich ruby carmine, quite different from the other varieties. Will bloom freely the first year. Needs winter protection.

**WEIGELIA, ROSEA.** Large, trumpet-shaped flowers in latter part of June, rose-colored. Flowers are produced so freely as to almost hide the leaves. Pretty and desirable. Should have protection the first winter and after that will take care of themselves.

**WHITE KERRIA (*Rhodotyphus Kerriodes*).** A very ornamental shrub of medium size, with handsome foliage and large, single, white flowers about the first of June, succeeded by numerous small fruit.



TREES AND SHRUBS ARE WORTH WHILE FOR THEIR WINTER EFFECT ALONE



## ROSES

*The very complete assortment of hardy roses we offer our trade is the result of years of careful selection with the sole aim of supplying roses of a hardiness that will withstand the rigors of our severe winter climate. The following roses with the proper care will come thru the hardest winters unimpaired.*



**ANNA DE DIESBACH.** The color is a brilliant rose; long, pointed buds and large, finely formed, compact flowers, very full, double and fragrant. A superior garden sort.

**BLACK PRINCE.** Very free flowering. Large, full and globular. Deep blackish crimson.

**CAPTAIN HAYWARD.** Bright crimson-carmine; an entirely distinct and attractive shade of color, of perfect form and sweet.

**CLIO.** A rose of perfect form and finish, with broad, thick petals, high full center, beautiful from pointed bud to fully opened flower. The color is a delicate satiny blush with slightly deeper center. The plant is vigorous and blooms freely, displaying its great flowers on good stems against large rich leaves.

**CRESTED MOSS.** Deep pink buds surrounded with mossy fringe and crest. The prettiest and most satisfactory Moss Rose. No one should fail to have a few in the rose garden.

**EARL OF DUFFERIN.** Rich, brilliant, velvety crimson, shaded with dark maroon; large, full and finely formed; delightful fragrance. A vigorous grower.



GRUSS AN TEPLITZ



**FRAU KARL DRUSCHKI or WHITE AMERICAN BEAUTY.** This rose is universally admitted to be the finest white rose grown. Of all the roses of recent introduction, this one has attracted by far the most attention from lovers of roses. The bush is vigorous, flowers are pure white, large, beautiful and produced freely.

**GENERAL JACQUEMINOT or JACK ROSE.** This rose holds first place among Hybrid Perpetual Roses and is one of the easiest to grow. Its color is a rich velvety crimson, large and very fragrant. Equally beautiful in bud state or open. One of the dark red roses. Should be one of the first roses planted.

**GRUSS AN TEPLITZ.** Unquestionably the finest brilliant red, hardy, ever-blooming garden rose. The flowers are very showy and handsome. It blooms constantly and continues covered with flowers the whole season. See cut.

**HARRISON YELLOW.** The hardiest rose we have. Needs no winter protection. The flowers are yellow, semi-double and produced in great profusion, in early June.

**HUGH DICKSON.** Brilliant crimson shaded scarlet, large smooth petals, slightly reflexed on the edges. Very fragrant and vigorous. One of the most desirable sorts.

**J. P. CLARK.** The color is unique among Roses, a deep scarlet shaded to blackish-crimson, with rich bloom like a plum. Flowers large and beautifully formed.

**MADAME GABRIEL LUIZET.** A very pretty rose, extra large, very double and full and delightfully perfumed. Color, a beautiful pink, distinct and very handsome. As an exhibition rose it is one of the finest.

**MADAME PLANTIER.** The flowers are white and of medium size, borne in large clusters and so plentifully that the long branches are often bent to the ground beneath their weight.

**MAGNA CHARTA.** A bright clear pink rose, flowers extra large, very double and sweet. A favorite among all growers on account of its strong, upright growth and bright, healthy foliage as well as for its magnificent flowers. We consider this our best pink rose for general cultivation.



**MARGARET DICKSON.** A finely formed waxy-white rose, fragrant, very handsome in bud. Foliage is large and dark green.

**MARSHALL P. WILDER.** Sometimes called the improved Gen. Jacqueminot. It has vigorous and healthy foliage; flowers are large and bright carmine red, very fragrant. Almost continuously in bloom. Good for cut flowers.

**MRS. JOHN LAING.** Soft pink, of beautiful form; exceedingly fragrant and remarkably free-flowering; always does well and stands very close to the top among fine roses.

**PAUL NEYRON.** One of the largest roses in cultivation. Color deep clear rose, very fresh and pretty. The plant is a very strong grower, often making shoots four feet long in a single season, each tipped with an immense flower often five inches in diameter. The bush is almost thornless and a good bloomer. This rose deserves a place in every garden.

**PERSIAN YELLOW.** The finest hardy yellow double rose grown. The flowers are of a deep golden color, produced very freely in June.

**PRINCE CAMILLE DE ROHAN.** Deep velvety crimson, large and moderately full. One of the darkest in cultivation and splendid rose.

**ULRICH BRUNNER.** An upright grower with bright, healthy foliage. Flowers are a bright cherry red, good size and of fine form.

**BABY RAMBLER ROSES**

**BABY CATHERINE ZEIMET.** Grows to a height of 20 inches and produces double, pure white flowers in abundance. Everblooming.

**BABY DOLL.** The color is absolutely new, and quite startling in its brilliancy, golden-yellow tipped with clear bright cerise. Blooms continuously throughout the summer.

**BABY ECHO.** A soft, tender rose shade.

**BABY RAMBLER RED.** A cross between Crimson Rambler and Gloire des Polyanthus, a clear, brilliant ruby-rose. The bush is vigorous, reaching a height of 18 to 24 inches. It will begin to bloom in June and continue throughout the entire summer until late frosts.

**CLIMBING ROSES**

**CRIMSON RAMBLER.** A grand climbing rose. It is a strong grower, often growing eight to ten feet the first season. The flowers are produced in great trusses, often thirty or forty in a cluster, appearing like large bouquets. The roses are small, semi-double, and of a bright crimson color. This rose may be trained to climb anywhere, on a trellis, fence, porch-pillar or fastened to the side of a house.

**DOROTHY PERKINS.** This magnificent new variety is the result of a cross of the Wichuraiana with the grand old rose Madam Gabriel Luizet. With us it has come through the winter in better shape than the Crimson Rambler. The leaves are glossy green, making it more ornamental than other roses when not in bloom. The flowers are of a large size for this class of rose, and are borne in clusters of from ten to thirty; very double. The petals are prettily rolled back and crinkled. Color, a clear shell pink; does not fade, and fragrant.

**EXCELSA, or RED DOROTHY PERKINS.** A distinct variety in form, color and habit. Having the clean, healthy foliage of the Dorothy Perkins and the brilliant coloring of the Crimson Rambler. An unsurpassed combination. Flowers very double, produced in large trusses of thirty to forty. Tips of petals tinged with scarlet. The finest of all climbers.

**WHITE DOROTHY PERKINS.** There has been a great demand for a white climber that would rank with Crimson Rambler, and now we have the pleasure of offering this variety, that in every way is the equal, if not superior to Crimson Rambler as a red, and Dorothy Perkins as a pink.



HANSA—BEST HARDY DOUBLE RED RUGOSA ROSE TO USE WITH SHRUB PLANTINGS



**QUEEN OF THE PRAIRIE.** The old standard climbing rose that will always remain popular. Flowers very large, of a peculiar globular form, rosy red, changing to lighter as the flower opens. A strong, rapid grower.

**TAUSENDSCHOEN, or THOUSAND BEAUTIES.** The flowers first open a delicate shade of pink, nearly white, changing to a rosy-carmine. Gets its name from its many flowers and variations in color. See cut.

**YELLOW RAMBLER.** The flowers are larger than those of the Crimson Rambler, but are not produced in as large clusters. We have found it rather tender.

### HYBRID RUGOSA ROSES

**AMELIE GRAVEREAUX.** Large, carmine-purple flowers, clean foliage, a valuable addition to any shrub group.

**BELLE POITEVINE.** Very free branching, every tip laden with immense bouquets of large reddish pink roses. Buds very long; perfume exquisite. As hardy as any shrub and can be used with other shrubs in grouping or border planting to very good advantage.

**BLANC DOUBLE DE COUBERT.** Purest paper white, blooming in clusters of from five to ten flowers; double, very sweet. A strong, rampant grower, having the true

Rugosa foliage. Flowers often measure five inches in diameter. Hardy and should be used freely with other shrubs.

**CONRAD FERD. MEYER.** An early flowering Hybrid combining the ornamental quality of its Rugosa foliage with the blossom beauty and perfume of the Hybrid Perpetuals. Flowers large, cup-shaped and double; of a delicate silvery pink.

**F. J. GROOTENDORST.** A new Hybrid Rugosa. (Cross between Red Rugosa and Crimson Baby Rambler) true rugosa foliage, blooms bright crimson in clusters, produced from early spring to frost; compact, dwarf grower but strong. Suitable for specimen or mass plantings.

**HANSA.** The best double-red Rugosa Rose. Very large. The foliage is a dark rich green and as an ornamental shrub has no superior. Every Rose enthusiast will welcome this new addition and because it is perfectly hardy it will be found most useful for foundation and mass plantings. See cut.

**ROSA RUGOSA, Red.** Single. See description under Ornamental Shrubs.

### TREE ROSES

Grafted on rose stalks about four feet from the ground. We have them in red, pink and white.



THE TOUSENDSCHOEN CLIMBING ROSE





## HARDY CLIMBING VINES

For covering Pergolas, Trellis, unsightly fences and sheds, or for softening the harsh corners and walls of stucco and masonry, nothing succeeds quite as well as these climbing vines.

**BITTER SWEET or CLIMBING CELASTRUS (Celastrus Scandens).** Very hardy. A strong grower, with large, fine leaves, yellow flowers and orange colored seed pods.

### CLEMATIS

The Clematis should be grown in rich soil that will not become hard. They should be watered at least once a week, in the evening, if the season is dry, using a good sized pailful to each vine; but do not water every day.

**CLEMATIS HENRYI.** Fine very large, creamy white flowers. The best large white variety. A perpetual bloomer.

**CLEMATIS JACKMANNI.** The flowers when fully expanded are from three to five inches in diameter. Color violet purple, distinctly veined. Blooms in July.

**CLEMATIS, MADAME EDWARD ANDRE.** Flowers about the same size as the Jackmanni, crimson red in color.

**CLEMATIS PANICULATA.** The flowers are white, small and star-shaped, very fragrant and so abundant as to almost hide the foliage. Plant vigorous, often growing twenty feet in a single season. It blooms late in the summer when most other vines are through blooming. Considered the best clematis grown. See cut.

**CLEMATIS, VIRGINIANA.** A native rapid growing vine producing an abundance of greenish white flowers, followed by brown, hair-like seed plumes.

**CLEMATIS VITICELLA.** A free-growing and free-flowering sort. Small blue flowers, 1-inch in diameter.

**DUTCHMAN'S PIPE (Aristolochia Siphon).** A vigorous and rapid-growing climber, bearing singular brownish-colored flowers, resembling in shape a pipe. Its flowers, however, are of little value compared to its fine light green leaves of large size, which retain their color from spring to fall.



PANICULATA CLEMATIS

**GRAPE, BETA.** This grape makes one of the best vines for covering porches and arbors. It is perfectly hardy without winter protection and produces an abundance of fruit of medium size, jet black and fair quality.

**HONEYSUCKLE, SCARLET TRUMPET.** An old favorite vine, bearing scarlet, trumpet-shaped blossoms through summer and autumn.

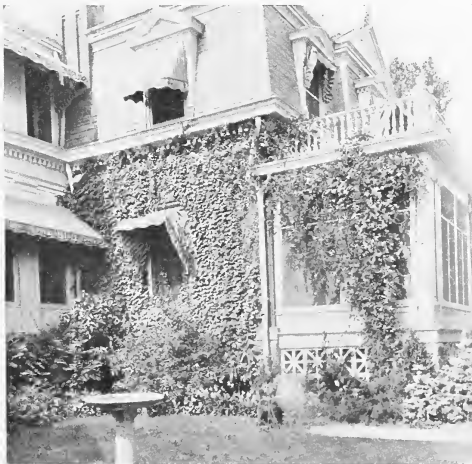
**HONEYSUCKLE, YELLOW TRUMPET.** Same habit as above with yellow blossoms.

**IVY, AMERICAN OR VIRGINIA CREEPER (Ampelopsis Quinquefolia).** A popular, hardy, strong-growing, climbing vine with healthy foliage which turns a rich crimson color in the autumn. Fine for exposed places.

**IVY, BOSTON OR JAPAN (Ampelopsis Veitchii).** Unfortunately we have found this vine quite tender. It cannot be depended upon unless protected well during winter the first three or four years; after that it acquires hardness, but should have some winter protection. Leaves smaller than the American Ivy and overlap one another.

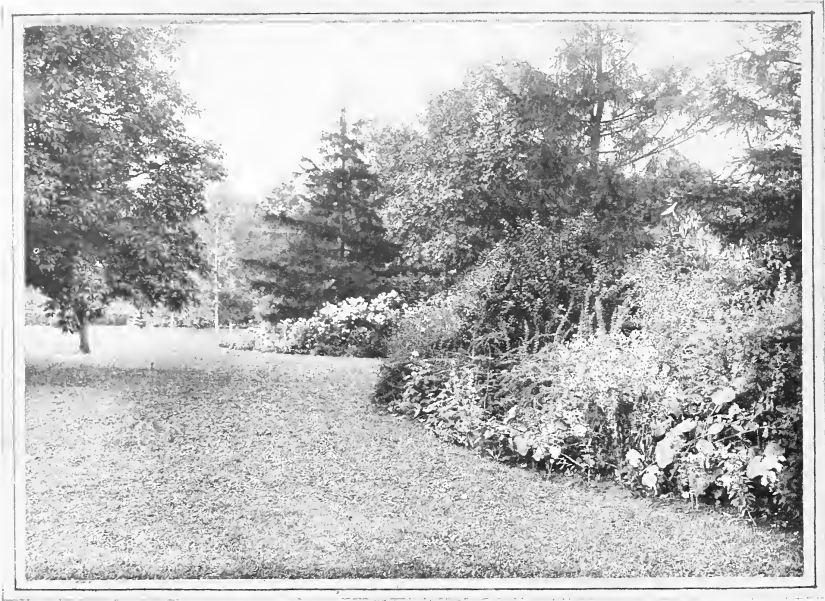
**IVY, ENGELMAN'S (Ampelopsis Engelmannii).** The best climbing vine for this climate, to cover brick or stone walls or any rough surface, as it clings without a trellis. It is a very rapid grower, often growing fifteen to twenty feet in a single season. In appearance it resembles the Common Virginia Creeper, but the leaves are smaller and the whole vine presents a neater appearance. The foliage turns a bright crimson color in the autumn. See cut.

**MATRIMONY VINE (Lycium Chinensis).** It produces a great number of purple flowers, which are succeeded by bright scarlet coral-like berries almost an inch long. It blooms throughout the summer and the fruit remains on the vine until late in winter. Particularly valuable for planting at the top of walls or embankments.

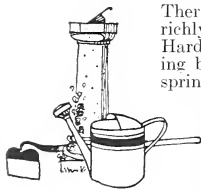


ENGELMAN'S IVY

*Vines Relieve Barrenness—Add Warmth*



## HARDY PERENNIAL FLOWERS



There is no class of plants that will so richly repay the lover of flowers as the Hardy Perennial. By judicious planting blossoms may be had from early spring until late fall. For planting in beds or borders or among the shrubbery no flowering plants can be used to such advantage. Although most of the perennials listed are perfectly hardy without winter protection, yet it will greatly benefit them all if the plants are mulched with straw or rotted manure.

### **Achillea Eupatorium—FERN-LEAVED YARROW.**

Plant growing three to four feet, with finely cut foliage, and bright yellow flowers all summer.

### **Millefolium Roseum—ROSY MILFOIL.** Finely cut foliage, flat flower heads, color magenta.

**Ptarmica Boule de Neige—BALL OF SNOW.** Double flowers of the purest white, borne freely most of the summer. Perfectly hardy and will thrive in any soil or location. Valuable for cut flowers and for border planting. One and one-half to two feet.

**Ptarmica Fl. Pl.—THE PEARL.** The plant is entirely covered from July to autumn with small double snowy white flowers. Two to three feet.

**Aconitum—MONKSHOOD.** The stems are slender and leafy, with many hooded flowers of much beauty. Invaluable for semi-shady places.

**Napellus Bicolor.** Low and compact. Flowers blue and white. Three to four feet.

**Spark's Variety.** Tall and slender. The flowers are a glistening, deep violet blue. Four to five feet high.

**Anchusa Italica—DROPMORE VARIETY.** Spreading plants of easy culture growing two to three feet high and producing a mass of rich gentian blue flowers nearly all summer.

**Anthemis Tinctoria—GOLDEN MARGUERITE.** Numerous small yellow flowers blooming from midsummer till frost. Useful for cut flowers. Very hardy. One to two feet high.

**Aquilegia—COLUMBINES.** These are among the most elegant and beautiful of hardy plants, producing their graceful spurred flowers on stems rising two feet or more above the divided foliage, and are highly prized for cutting.

**Alba.** White flowers.

**Canadensis.** The native bright red and yellow variety.

**Crysantha.** Bright yellow, long spurred.

**Coerulea.** Blue and white, long spurred flowers. The Rocky Mountain columbine.

**Mixed.** Delightful combination of colors in short and long spurred, double and single varieties.

**Artemesia Frigida—COLORADO MOUNTAIN FRINCE.** A plant with silvery gray foliage. Useful as a border to beds of other flowers.

**Asters, Fall Blooming—MICHAELMAS DAISIES.** Some of the showiest of our late flowering hardy plants. For best effect they should be planted in masses.

**Novae Angliae.** Old New England Aster, three to four feet tall, wonderful fall show of deep violet-blue flowers remaining in bloom until the ground freezes.

**Novi-Belgii.** Reddish pink, four to five feet high.

**Belamcanda Chinensis—BLACKBERRY LILY.** An old garden favorite, with orange flowers spotted red, and clusters of shining black, roundish seeds resembling blackberries. Two to three feet high.



**Bocconia Cordata—PLUME POPPY.** Stately hardy perennial, growing five to six feet high, with finely cut foliage and numerous creamy white flowers borne in terminal panicles.

**Boltonia—FALSE CHAMOMILE.** Showy hardy perennial plants producing single aster-like flowers during the late summer and autumn months.

**Asteroides.** Flowers pure white, four to six feet.

**Latisquama.** Pink with a slight tinge of lavender, four to six feet.

**Campanulas—BELLFLOWERS.** A popular class of flowering plants, carrying more sentiment and tradition with them from old time gardens than any other. They like a good rich soil and for best results should be planted in a half shady place.

The Canterbury Bell, and Cup and Saucer varieties are true biennials, producing foliage the first year, their attractive blossoms the second year, then die. To keep a succession of bloom one should plant them every year.

**Calycanthemum—CUP AND SAUCER.** A double form of the Canterbury Bells. In blue, rose or white.

**Carpatica—CARPATHIAN HAREBELL.** A dwarf compact plant growing six to eight inches high. Bears clear, blue flowers on erect stems from June to September. Excellent border plant.

**Carpatica Alba.** A pure white form of the above.

**Medium CANTERBURY BELLS.** Among the many plants flowering in late May and June, the Canterbury Bells are among the showiest and most effective. A biennial blooming one season and then dying. We have them in blue, pink or white.

**Percisifolia—PEACH BELLS.** Flowers broadly bell shape. Blue or white. Two feet.

**Pyramidalis—CHIMNEY BELLFLOWER.** Grows four to five feet high and bears large blue or white flowers in August. Very conspicuous.

**Chinese Lantern Plant—PHYSALIS FRANCHETII.** An ornamental variety of the Winter Cherry, forming dense bushes about two feet high, producing freely its bright orange scarlet lantern-like fruits; which when cut will last all winter and make the best house decoration obtainable. Very attractive plant.

**Clematis Recta—SHRUBBY CLEMATIS.** One of the best hardy perennials, with handsome pure white flowers in very large, showy clusters during June and July. Two to three feet.

**Davidiana.** A most desirable variety with bright green foliage and tubular bell-shaped flowers of deep, lavender blue during August and September. Two to three feet.

**Coreopsis Lanceolata—TICKSEED.** A showy and valuable plant with an abundance of yellow flowers on long stems; fine for cutting. Blooms very early and stays until frost. Two to three feet high.

**DAHLIAS**

One of the best summer and autumn flowering plants and now enjoying a wide popularity. The roots must be dug up after the first frosts and stored in cellar over winter. The following is a description of the best sorts: See cut.

**Clifford W. Bruton.** Very large, clear canary yellow.

**Golden Wedding.** A giant in flower and plant. Deep golden yellow.

**Grand Duke Alexis.** Pure white shading to a most delicate and charming shell pink.

**Jack Rose.** The best crimson for garden or cutting.



DAHLIAS

**Kriemhilde.** Deep rose pink with lighter center. One of the finest cactus Dahlias.

**Lyndhurst.** Brightest vermilion.

**Red Hussar.** Richest dazzling cardinal red.

**Sylvia.** Deep pink tinting to flesh pink at center; large, perfect form, on long stiff stems. One of the best for cutting or garden.

**Delphiniums—HARDY LARKSPURS.** These deserve an important place in the perennial border. The flower stalks of white and various shades of blue, are produced from the latter part of June until August. See cut.

**Belladonna.** Most continuous bloomer of all Larkspurs, with delicate, clear turquoise blue flowers. Four to five feet.

**Chinese.** Dwarf variety, with fine feathery foliage and deep gentian blue flowers. One to two feet.

**Chinese Album.** A form of the above with white flowers.

**Formosum.** Old favorite, dark blue, with white center; four to five feet high. Strong grower and free bloomer.

**Gold Medal Hybrids.** This is an extra fine strain of strong, vigorous habit, with immense spikes of large flowers from two to three feet long, mostly in fine shades of light blue. Five to six feet.

**Dianthus—HARDY GARDEN PINKS.** Without the spicy fragrance of the hardy pinks a garden is incomplete; and their perfect form and rich coloring make them great favorites for summer bouquets.

**Barbatus—SWEET WILLIAM.** A well known, old fashioned garden favorite; free flowering and very showy when in bloom. Assorted colors.



BELLADONNA LARKSPUR



**Latifolius Atrococcineus Fl. Pl.—EVERBLOOMING HYBRID SWEET WILLIAM.** A variety producing masses of brilliant crimson flowers all season. Ten to twelve inches high.

**Newport Pink.** Watermelon pink or salmon, rose colored flowers borne during midsummer in massive heads on stems about eighteen inches high.

**Plumarius—GRASS PINK.** Low, tufted variety rarely exceeding one foot in height. Blooming in early summer with many fragrant flowers varying in color from white to purple and variegated.

**Dicentra Spectabilis—BLEEDING HEART.** An old fashioned favorite; its long racemes of graceful heart-shaped pink flowers are always attractive, and perfectly at home in any part of the hardy border, and especially valuable for planting in the shade.

**Digitalis Gloxiniaeflora—FOXGLOVE.** A well-known garden plant, bearing spikes of long, tubular flowers in rose, purple, or white. Needs winter protection. Biennial.

**Grandiflora.** A true perennial, bearing flowers similar to above variety but yellow in color.

**Ferns, Hardy.** Succeed best in a shady location protected from strong winds. Ferns require a good deep rich soil and plenty of moisture.

**Funkia—PLANTAIN LILY.** The broad, massive foliage of the plantain lilies makes them attractive even when not in blossom. Especially adapted to shady locations. One to two feet.

**Coerulea.** Spikes of light blue flowers and large handsome, dark green foliage.

**Subcordata Grandiflora.** Bears pure white, lily-shaped, fragrant flowers in August and September.

**Variiegata.** Green and white variegated foliage, purple flowers. Very conspicuous.

**Gaillardia Grandiflora—BLANKET FLOWER.** One of the showiest hardy plants, growing about two feet high and succeeding in any soil in a sunny position; beginning to flower in June, they continue the entire season. The large flowers are of gorgeous coloring. The center is dark red brown, while the petals are marked with rings of brilliant crimson, orange and vermilion, and often a combination of all in one flower; excellent for cutting. Not affected by early frost.

**Gypsophila Paniculata—BABY'S BREATH.** A very graceful hardy perennial. Grows two to three feet high forming a large symmetrical clump. During August and September it produces masses of minute, pure white flowers borne on wiry stems. When cut it is very valuable in combination with other flowers.

**Paniculata Flore Plena.** This is a decided improvement on the single flowering Baby's Breath. The little double rosette-like flowers which are produced in large branching panicles two to three feet high, are not only valuable to cut for immediate use, but can be cut and dried, retaining their beauty for months.

**GLADIOLUS**

One of the most beautiful flowers and so easily grown that no one should hesitate to plant freely of these bulbs. As cut flowers they are very showy and last several days. There is no other flower with such variety of coloring. If bulbs are planted at intervals of ten days, choice flowers may be had from the first of August until October. The bulbs must be taken up in October and placed in cellar until spring. We offer the following choice sorts: See cut.

- America.** Beautiful, soft flesh pink.
- Baron Hulot.** Rich, deep indigo blue.
- Black Hawk.** Very deep red, stained black. Large round blossoms.
- Chicago White.** White with lavender markings. Flower small but early.
- Glory of Holland.** One of the finest new white varieties introduced from Holland.
- Groff's Silver Trophy Mixture.** This strain affords an unusually fine range of colors and has attracted attention on two continents. One of the finest mixtures possible to make.
- Halley.** A lovely salmon-pink with lower portion blotched red and yellow.
- Mrs. Francis King.** A fine, strong growing variety with large spikes of showy flowers. Color a bright shade of pure scarlet.
- Niagara.** In color the flowers are a delightful cream shade with the two lower inside petals or segments blending to canary yellow. The throat is splashed with carmine, and the lower ends of the outside petals are blotched with carmine.
- Panama.** A grand pink variety which evokes words of praise wherever exhibited. Spike long, with flowers large and well arranged.
- Peace.** Beautiful white, with pale lilac feathering on interior petals.
- Princes.** Rich crimson with very deep shadings in throat, and magnificent large white blotches on lower petals.
- Schwaben.** A magnificent variety of strong growth with strong erect spikes of large well expanded flowers of a clear



1. Groff's Silver Trophy Mixture.  
 2. Baron Hulot.  
 3. Panama.  
 4. Niagara.  
 5. Glory of Holland.



HOLLYHOCKS

canary-yellow with a small blotch of deep garnet in the throat.

**Velvet King.** Dark scarlet. Fine variety.

**Willy Wigman.** Blush white, dark blotch, fine form.

**Helenium Autumnale Superbum—SNEEZE WORT.** Hardy plant of easy culture, in sunny location, growing four to six feet high; producing during late summer and autumn spreading heads of golden yellow flowers.

**Hoopesi.** Plant growing about two feet high, bearing pure orange yellow flowers about two and one-half inches across, in June and July.

**Riverton Beauty.** Rich lemon yellow with large purplish black cone. August and September; three to four feet.

**Riverton Gem.** Old gold, changing to wall-flower red August and September. Three feet.

**Heliopsis Pitcheriana—ORANGE SUNFLOWER.** Hardy perennial growing two to three feet high, bearing deep yellow flowers about two inches in diameter, which appear from July and August until the end of summer.

**Scabra Zinniflora.** Double flowering form of the Orange Sunflower, growing about twenty-four inches high, and producing during July and August, golden yellow flowers closely resembling a Zinnia in form. Desirable cut flowers.

**Hemerocallis Flava—YELLOW DAY LILY or LEMON LILY.** One of the best and hardiest of all perennial plants, growing two to three feet high, with narrow, grass-like foliage, and deep lemon yellow, fragrant flowers from early June until well into July. The individual flower is of a rather short duration, but there is a rapid succession of bloom, so that each plant makes a good showing continuously during its flowering period.

**Florham.** A choice variety with large, sweet scented, golden yellow flowers, during June and July.

**Fulva—TAWNY DAY LILY or GOLDEN LILY.** Grows from four to five feet high with trumpet-shaped flowers of a neutral orange color with darker shadings; June and July. Does well in shade.

**Fulva Fl. Pl.** A double form of the above.

**Heuchera Sanguinea Rosea—CORAL BELLS.** A most desirable compact plant of robust constitution. Grows one and one-half to two feet high, and bears during June and July; loose, graceful spikes of coral-red flowers. Excellent for cutting.

**Alba.** Has pure white flowers and makes a showy combination with the above.

**Hibiscus Moscheutos, Crimson Eye—MALLOW.** A tall perennial plant growing about four feet high, producing immense pure white flowers with crimson center. The foliage is large of a healthy green. August and September.

**Meehan's Mallow Marvels.** A magnificent strain of hardy Mallows, which for size and profusion of bloom and richness of coloring are among the most striking and beautiful perennials that grow. Flowers eight to ten inches in diameter ranging in color through various shades of red, pink and white.

**Hollyhocks.** Are undoubtedly among the most ornamental and handsome garden flowers, with their tall spikes, dotted all the way up with large flowers of the most lovely shades and colors. They fit in the smallest garden, and can be used with great effect in all kinds of borders, shrubbery, against the house or along the fence. No matter where they are planted they are always handsome, pleasing and ornamental. A slight protection during the winter will be beneficial. We offer them in double red, pink, white, yellow and maroon. See cut.

IRIS

No garden would seem complete without a collection of these well-known, old-fashioned plants which are of easy culture and among the best of our early flowering sorts. See cut. We offer the following choice varieties:

**Brooklyn.** Standards porcelain, falls light blue-veined russet. Very attractive.

**Canary Bird.** Standards bright yellow, falls deep yellow. One of the best.

**Florentina Alba.** An excellent variety for cutting and an early bloomer. Flowers ivory white, tinged with lilac.

**Fragrans.** White edged with blue; falls white with blue penciling.

**Hector.** Standards soft clouded yellow, falls velvety crimson black; attractive.

**Honorable.** Intense yellow, falls a beautiful bronze.

**L'African.** Rosy purple, falls darker, veined white at base.

**Madam Chereau.** Pure white, edged with azure blue; falls deep white with blue penciling. See cut.

**Mrs. H. Darwin.** Very fine large white.

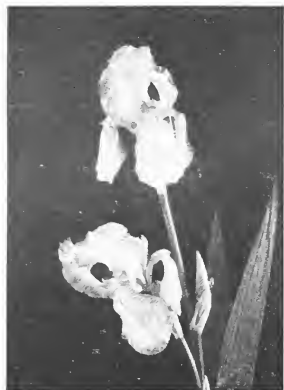
**Neclecta.** Uprights fine blue; falls deep blue. Large flower.

**Parkmanni.** Pure lemon yellow, falls white veined purple.

**Penelope.** Standards white, falls white veined red.

**Pallida Dalmatica.** Standards lavender, falls lavender shaded blue. Exquisite in every way and fine for massing.

**Queen of the Gypsies.** Dusky light bronze, falls purple red.



IRIS---MADAM CHEREAU

**Iris Kaempferi—JAPANESE IRIS.**

The blooms rival the orchids in their richness, purity and exquisite shadings of color. Not very hardy. We have the following fine sorts:

**Apollo.** Pure white, pink center.

**Gold Bound.** Pure white, one of the best.

**Mahogany.** Dark red shaded maroon.

**Pyramid.** Lilac blue, veined white center each petal.

**Templeton.** Light violet, mottled reddish pink and white; triple flower; exceedingly fine.

**Iris, Pumila—DWARF BEARDED IRIS.** Purple flowers. Grows about ten inches high, coming into bloom early in April. Suitable for border effect or in front of taller growing kinds.

**Iris, Siberian Blue.** Strong growers and very hardy. Flowers clear, borne on long stems. Valuable for cutting. Bloom later than the German Iris. See cut.

**Iris, Siberian White.** Very showy when planted in combination with above.

**Lathyrus Latifolia—HARDY SWEET PEA.** A rampant grower, resembling the annual Sweet Pea. It is a good trellis plant, and is adapted as a cover to wild, rough places; such as a rock garden or embankment. It succeeds in shade and grows rapidly.

**LILIUMS**

**Lilium Auratum—GOLD BANDED LILY.** The flowers are large and graceful, composed of six petals of a delicate ivory white, thickly studded with chocolate crimson spots, and striped through the center a golden yellow. Not very hardy. Needs good winter protection.

**Elegans.** There are innumerable varieties of this lily varying in color from deep rich orange to apricot and flaming red shades. Blossoms large, borne in clusters at tip of short, stout stems.

**Myriophyllum—Regal Lily.** This variety we consider the finest of all Lilies. Not only on account of its large white fragrant flowers, but owing to its extreme hardiness and easy culture. It is absolutely hardy in all localities. May also be used for fore-

ing being predicted to become the Easter Lily of the future. The flowers are very large, white and slightly suffused with pink, with a beautiful shade of canary yellow at extreme base of center. Delightfully perfumed reminding one of Jessamine. Blooms in July.

**Speciosum Rubrum or Roseum.** White, heavily spotted with rich rosy crimson. Not very hardy. Should be well protected during winter.

**Tigrinum—SINGLE TIGER LILY.** A popular garden lily with large, bright orange blossoms, marked with dark spots.

**Tigrinum Fl. Pl.—DOUBLE TIGER LILY.** This magnificent lily is borne in immense clusters on tall stems. The flowers are very large, frequently six inches across, and very double. Color deep fiery red, spotted with black. Should be in every border.

**Lily of the Valley (Convallaria Majalis).** A well known little favorite. Should be planted in a partly shaded location.

**Linum—FLAX.** Dainty, feathery foliage and sparkling single flowers all summer. Blue or white.

**Lobelia Cardinalis—CARDINAL FLOWER.** Interesting hardy perennial, growing two to four feet high, producing vivid crimson flowers on long spikes in August and September. Very effective at their season of bloom.

**Lupinus Polyphyllus—LUPINES.** Effective plants, producing large spikes of flowers in an assortment of blues, pinks and whites.

**Lychnis Chalcedonia—CAMPION.** Plant of easy culture, growing two to three feet high, producing brilliant vermilion scarlet flowers in June and July. Showy border plant and good for cutting.

**Lysimachia Nummularia—CREEPING JENNY.** Valuable for planting under trees or shrubs where grass will not grow. It quickly forms a dense carpet, and bears bright yellow flowers which make it attractive.

**Monarda Didyma—OSWEGO TEA.** Grows from two to three feet high, with brilliant crimson scarlet flowers during July and August. Adapted to any soil or location.



GOLD MEDAL HYBRID LARKSPUR



**Myosotis—FORGET-ME-NOT.** Clusters of dainty blue flowers. Few spring flowers are more admired than the lovely Forget-Me-Nots, which are especially effective when grown in masses.

**PEONIES**

We have given special attention to growing Peonies for several years and are offering some of the choicest varieties, which we have fully tested and found to be vigorous growers and good bloomers. The Peony is a well known favorite that rivals the rose in perfection of blossom and coloring. Double flowers four to six inches across, borne in May and June in the greatest profusion. Peonies are an investment that increase in value and beauty each year. No skill or special attention is required to make them succeed. See cut.

**Achille.** Light flesh color. Fine large bloom; healthy, profuse bloomer.

**Agida.** Dark red, full and profuse bloomer. A general favorite.

**Couronne d'Or.** Very late. Good sized flowers of creamy white, reflecting golden tints from the collars of stamens inside; sometimes flaked carmine on center petals.

**Delachii.** Fine, dark crimson.

**Duchesse De Nemours.** Very fine cup-shaped bloom; sulphur white, with greenish reflex, fading to pure white. Exceptionally pretty in the bud. Late, and one of the best of the white sorts.

**Duke of Wellington.** Soft white, with pale, creamy white center.

**Empress.** Very large, splendid flowers, soft pink, fading to white. Late and a fine keeper.

**Festiva Maxima.** About the largest and undoubtedly the most popular Peony of them all. High built flowers borne on long stiff stems; the purest white, inner petals slightly tipped carmine. Early. See cut.

**Floral Treasure.** A marvel in beauty and blooming quality; most exquisitely fragrant. The fine, clear, bright pink flower remains a long time in bloom, is very double, brilliant and perfect in outline.

**Francoise Ortegat.** Dark, rich crimson. One of the most popular sorts.

**Golden Harvest.** Very striking, large, tri-colored blooms; guard-petals bluish pink; center creamy bluish white.

**Grandiflora Rubra.** Extra large, perfect balls of blood red, magnificent flowers. Given good rich soil the flowers will be immense in size, often eight to nine inches across and so double as to appear like perfect balls. A late variety.

**Humei Pleno.** It is a large rose pink, compact, glorious flower.

**La Tulipe.** Enormous, globular, fragrant flowers. Delicate bluish-white shading to ivory white, with red tulip markings on outside of guard petals. A distinct, grand cut flower variety.

**L'Esperance.** Exceedingly fine, vivid rose colored flowers, high, full center, very compact, early and free blooming, highly perfumed. The best rose-colored Peony.

**Louis Van Houtte.** Fine violet-red bloom of dazzling effect. A



well formed and free blooming sort. Good for massing and cut flowers.

**Madame de Verneville.** A very valuable peony. Large, globular form. White, center petals tipped carmine; very fragrant. Blooms later than Festiva Maxima and equal if not superior in beauty.

**Madame Crousse.** Large, fragrant, pure white flowers, sometimes slight crimson markings in the center. Flowers compact and of

fine form. A choice variety.

**Marie Lemoine.** Extra large, late, free flowering, ivory white. Very choice.

**Officialis Rubra Pleno.** The well-known, very early, double crimson.

**Queen Victoria or Whitley.** A full, strong, white flower. A good bloomer.

**Rosea Magna.** Strong growing pink variety.

**Rubra Triumphans.** Early bloomer; flowers like glowing crimson satin, intense, rich and brilliant; sweet scented.

**Rubra Superba.** Dark crimson, fine form and fragrant. Vigorous grower and good bloomer when well established. Very late.

**Victor Tri-Colors.** Outer petals pale rose, mottled with pink; center ones yellowish white, with few red marks; very large, full and sweet.

**Walter Morgan.** The Golden. The demand for a yellow Peony has been increasing year by year, and this comes the nearest to a real yellow we have ever seen.



FESTIVA MAXIMA PEONY

*It's Not a Home — Until It's Planted*



**Papaver Nudicaule—ICE-  
LAND POPPY.** The plant  
is of neat habit, forming a  
tuft of bright green fern-like  
foliage, from which spring,  
throughout the entire sea-  
son, a profusion of slender  
leafless stems one foot high,  
each graced with charming  
cup-shaped flowers.

**Orientele—ORIENTAL  
POPPY.** For brilliancy of  
color there is nothing to  
equal this flower. The  
flowers are five to seven  
inches across, produced on  
tall stems, and are of the  
most intense and brilliant  
crimson imaginable; each  
flower has a black spot in  
the center. Blooms in  
June.

**Orientele Princess Vic-  
toria Louise.** A fine sal-  
mon pink variety.

**Pennisetum Japonicum—  
JAPANESE GRASS.** This  
variety grows about three  
feet high, foliage narrow, of a  
bright green. The cylin-  
drical flower heads, carried  
well above the foliage, are  
tinged with bronze purple.  
One of the most valuable  
hardy grasses.

**Pentstemon Barbatus Torreyi—  
BEARD TONGUE.** Use-  
ful, showy, perennial plant,  
growing three to four  
feet high and bearing spikes  
of brilliant scarlet flowers  
in June and July.

**Digitalis.** Large spikes of  
long purple and white  
flowers with purple throats.  
June and July. Two  
to three feet.

**Pubescens.** Flowers a  
bright rosy-purple. One  
foot high.

**PHLOX**

Among hardy perennial plants no class is of more importance than the Phlox, succeeding in almost any position and flowering from mid-summer until late in the fall. Phlox bloom the same summer after planting. Great improvements have been effected within the past few years. We now have them in clear, bright colors, as well as in most delicate shades, blended in beautiful combinations which everyone admires. The following varieties are among the choicest grown:

- B. Comte.** Brilliant French-purple.
- Bacchante.** Tyrian-rose with crimson carmine eye.
- Bridesmaid.** Pure white, with large crimson eye.
- Champs Elysee.** Fine, richly purplish crimson, of compact form. Early.
- Eclairer.** Rosy-magenta with light halo.
- Europa.** A white variety with a decided carmine eye. Flower trusses very large and of erect habit.
- Fraulein G. Von Lassburg.** Extremely large florets and fine trusses. Pure white. A choice variety.



AN ATTRACTIVE MASS OF PHLOX

- H. O. Wijers.** Pure white, with crimson eye.
- La Vogue.** Clear lilac-pink.
- Madame Bezanson.** Beautiful crimson, good bloomer. One of the best.
- Miss Lingard.** The earliest white, very long, loose, graceful panicles; the florist's favorite. Comes into bloom about July 1st. See cut.
- Mme. Paul Dutrie.** Delicate lilac-rose in shade like a soft pink orchid. The flowers are large and in immense panicles.
- Mrs. Jenkins.** Early white, immense panicles. One of the best.
- Pantheon.** A large, beautiful, pure pink variety. We consider it the best pink.
- R. P. Struthers.** Rose carmine with claret eye. Very bright.
- Richard Wallace.** White with violet-red eye.
- Robinson.** A choice bright salmon colored variety.
- Rosenberg.** Crimson-purple.
- Subulata—MOSS PINK.** Low spreading stems, narrow moss-like leaves. Flowers pink or white.
- Von Hochberg.** The richest crimson colored phlox. A good variety.
- White Lady.** A good early white variety. Growth medium, flower clusters compact.
- Physostegia Virginica—FALSE DRAGON-HEAD.** One of the best summer blooming hardy perennials, forming large bushes three to five feet high, bearing spikes of beautiful, tubular flowers in July and August. We have them in pink and white.





**Platycodon Grandiflorum—BAL-LOON FLOWER or JAPANESE BELL-FLOWER.** Blooms constantly from July until late in September; flowers large, bell-shaped and of a deep shade of blue. An extremely rapid grower, making a dense branching bush two to three feet high.

**Grandiflorum Album.** Same as above only flowers are white.

**Pyrethrum Hybridum—PERSIAN DAISY.** The daisy-like flowers are both single and double in shades of white, pink and red to deep crimson. The blossoms are produced on long graceful stems, making it a very desirable cut flower. Begins to bloom early in June, remaining in bloom a long time. If cut back after their spring display, new growth and new flowers will be produced later.

**Leucanthemum — OX-EYE DAISY.** A very prolific, free flowering variety resembling Shasta Daisy. Easily grown and fine for cutting. White blossoms. Very hardy.

**Pyrethrum Uliginosum—GIANT DAISY.** A hardy, tall growing plant, throwing out innumerable long stems which bear clusters of large pure white flowers with yellow centers. The plants are exceedingly showy and valuable for cut flowers. Blooms late in the summer and continues until cut off by frost. No garden should be without at least a few of these plants. See cut.

**Ranunculus Repens—BUTTERCUP.** A pretty double flowering, bright golden-yellow Buttercup. Masses of blossoms, during May and June.

**Ribbon Grass—Phalaris Arundinacea Variegata.** Green leaves, striped lengthwise with creamy white.

**Rudbeckia Laciniata—GOLDEN GLOW.** A well known popular plant, strong, robust grower, attaining a height of five to six feet. Produces masses of double golden-yellow, Dahlia-like flowers from July to September.

**Newmanni.** Dark orange-yellow flowers, with deep purple cone borne on stiff, wiry stems three feet high. July to September.

**Nitida—AUTUMN SUN.** Plant growing four to six feet high, bearing attractive single flowers with broad petals of light primrose yellow during August and September.

**Purpurea—PURPLE CONE FLOWER.** Blossoms about four inches across of a peculiar reddish-purple, with a remarkably large cone-shaped center of brown. July to August.

**Scabiosa Caucasica—BLUE BONNET.** Handsome border plant, producing flowers in a beautiful shade of lavender, on stems eighteen to twenty-four inches, from June until September.



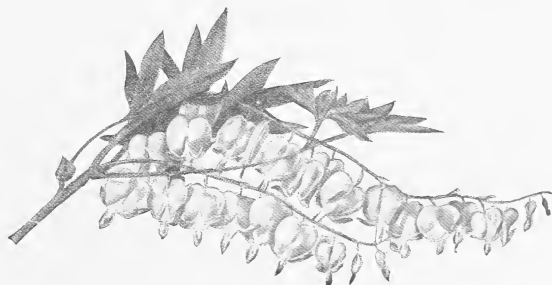
GIANT DAISY

rosy tinted white flowers with a heliotrope odor. June and July.

**Vinca Minor—TRAILING MYRTLE.** An evergreen trailing plant, very adaptable for covering ground under trees and shrubs where grass will not grow. Valuable for covering graves.

**Viola Cornuta—TUFTED PANSIES.** These plants flower continuously for six to seven months in the year. Their flowers are not so large as those of the Pansy, but their bright colors and free flowering habit make them fine additions to any garden. Yellow, white and purple.

**Yucca Filamentosa—ADAM'S NEEDLE.** An effective herbaceous plant, with long, narrow, bright green leaves. The flowers are creamy white, bell-shaped, produced on long stems three to four feet high.



BLEEDING HEART



# ORNAMENTAL HEDGES

A wall of living green, well cared for, is more desirable, ornamental and satisfactory for either garden enclosure or to mark property lines than any fence that can be bought. Hedges require no repainting, or other annual expense to keep them good looking. In fact, outside of proper trimming and cultivation, they take care of themselves.

**BARBERRY, THUNBERG'S.** Where a dwarf hedge is wanted, nothing equals this beautiful Barberry. It requires but little pruning to keep it in shape. The leaves are small, light green, and towards fall assume rich brilliant colors, the fruit or berries becoming scarlet. Absolutely hardy in all parts of the country.

**BUCKTHORN.** A well-known ornamental hedge plant that stands close pruning without injury. Where trimmed the leaves soon cover the cut, making the hedge appear like a smooth and glossy wall of living green. It does not cause annoyance by sprouting from the roots like the lilac and many other plants used for hedges. In the most exposed situations on the prairie where such trees as the Cottonwood, Poplar, Box Elder and many other varieties suffer from drought and cold dry winters, the Buckthorn hedge stands uninjured to the very tip of every branch and twig. It bids defiance to the severest frosts of winter and the most parching heats of summer. The leaves are of a rich, healthy green color, remaining in perfect condition throughout the summer. Though it is a strong grower it can be kept down to any size desired by frequent trimming. In order to get a pretty hedge the plants must be trimmed severely the first few years so as to get numerous strong branches near the ground. The principal thing in growing a hedge is to get it thick at the very bottom. The plants are generally set eight to nine inches apart in a single row. The plants should be cut back at least half their length immediately after planting. Some hedge plants are very particular as to the time for trimming, but not so with the Buckthorn. It will stand trimming at any time. It is best to trim as soon as the hedge is ill-shaped. The first summer the hedge will not need trimming more than once or



BUCKTHORN HEDGE

possibly twice, but after this it will need trimming two or three times each year. If the hedge is attended to at the right time it requires but little work to keep it properly trimmed. See cut.

**CARAGANA, or SIBERIAN PEA TREE.** Thrives in any well-drained soil. Very compact in its growth and desirable for a medium or tall-growing hedge. Hardy in the most exposed locations.

**COTONEASTER.** An unusually attractive shrub with glossy green leaves. The foliage turns a beautiful red in the autumn.

**CURRENT, ALPINE.** (See description under Ornamental Shrubs.) We consider this one of the choicest hedge plants where a low hedge, eighteen or twenty-four inches high is desired.

**DOGWOOD, SIBERIAN.** (See description under Ornamental Shrubs.)

**HONEYSUCKLE, TARTARIAN.** Very hardy, easily transplanted and does well in most any soil. Where a thick attractive hedge three to six feet is wanted, this variety is one of the best. The foliage appears early in the spring and the grayish bark is attractive during the winter. Stands trimming well. See cut, which shows a Honeysuckle hedge about the yard of one of our North Dakota customers.

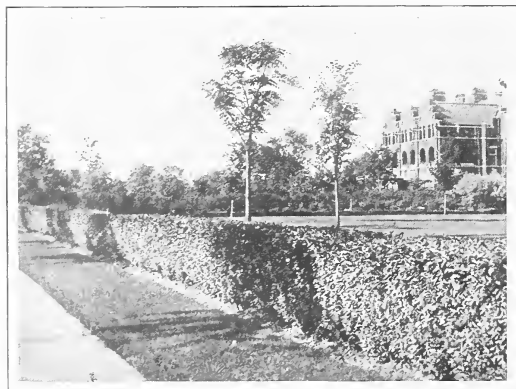
**OLIVE, RUSSIAN.** The bright silvery white foliage makes this plant doubly attractive for hedge purposes. Withstands shearing well, and succeeds in fairly dry locations.

**ROSA RUGOSA.** (See description under Ornamental Shrubs.)

This hardy and valuable shrub is now being extensively used for hedges.

**SPIREA VAN HOUTTE.** (See Shrubs.) Generally known as Bridal Wreath. Makes a very graceful beautiful hedge, and should be more universally planted, especially as division lines between lots and similar locations.

**WILLOW, GOLDEN.** Makes a very rapid, coarse-growing hedge, suitable for screening in back lots or gardens. The bark is of a golden yellow and makes a pretty appearance during winter and early spring.



HONEYSUCKLE HEDGE

*Hedges Make Freindly Fences*



# HARDY SHADE AND ORNAMENTAL TREES

All nursery-grown, transplanted trees that with ordinary care will insure their growth. The seed from which we grow our Box Elder, Elm, Maple and Ash are from native Minnesota trees grown near our nursery. We know by experience that the farther North the seed is gathered the harder the tree will be. The vitality and hardiness of the trees inheres in the seed. Box Elder and Red Cedar from the South are worthless here and many other trees more or less so. We advise caution in buying stock from the South and East.



WHAT IS IT WORTH TO YOU TO HAVE YOUR CHILDREN PLAY AND GROW UP UNDER THE SHADE OF BEAUTIFUL TREES?

**ASH, GREEN or WHITE (Fraxinus Americana).** Very hardy. Valuable for forest planting on our Western prairies. A fine, medium sized tree of upright growth, that thrives in all kinds of soil. It is long lived and very desirable. A native of Minnesota. One of the most satisfactory trees for street planting that we have.

**BASSWOOD or AMERICAN LINDEN (Tilia Americana).** A close headed, upright native tree with large leaves and fragrant blossoms.

**BIRCH, CANOE (Betula Papyrifera).** A desirable graceful tree with slender branches and silvery white bark. Very effective when planted among or near evergreens for winter effect. This valuable tree is now gradually taking the place of the Cut Leaved Weeping Birch which is not generally grown.

**BIRCH, EUROPEAN WHITE (Betula Alba).** A medium size tree of rapid growth. Very ornamental, both winter and summer, having white bark.

**BUTTERNUT (Juglans cinerea).** A native tree of medium size, spreading head, reddish colored dark foliage; very thick; nut oblong and rough.

**BOX ELDER (Acer Negundo).** Hardy. A native tree of spreading habit and rapid growth. Very popular as a timber tree on our Western prairies. Thrives in sandy soils, where the Elm does not grow so well. We advise planting Box Elder and Green Ash in very sandy soil.

**CATALPA, HARDY (Catalpa Speciosa).** In sheltered locations, when the tree becomes well established, it is hardy. The trunk should be protected, as it is liable to sunscald when young. Flowers in large panicles, showy and fragrant. Very large heart-shaped leaves. A desirable lawn tree.

**CERCIDIPHYLLUM.** Hardy, ornamental shrubby tree of pyramidal habit. Handsome light green foliage, purplish when unfolding, turning bright yellow or partially scarlet in the Fall.

**ELM, AMERICAN or WHITE (Ulmus Americana).** This native tree is noted for its gracefulness, beauty and majesty. It is hardy and of rapid growth. The White Elm is by far the best tree we have for street or park planting where the soil is fairly rich. It is a rapid grower, clean in habit, does not split as badly in a storm as most trees, and all things considered, we have no tree equal to it. Should be used in timber planting on our Western prairies, as it endures extreme heat and cold. It is very long lived. See cut.

**ELM, CAMPERDOWN WEEPING (Ulmus glabra Camperdownii).** Grafted six to eight feet high forms a handsome head, spreading habit. The foliage is large, luxuriant, dark green. A desirable weeping tree.

**ELM, RED (Ulmus Fulva).** Very hardy, of spreading, straggling growth.

**HACKBERRY (Celtis Occidentalis).** Makes a very handsome tree. It has Elm-like leaves, rough bark, and bears brownish black berries in the fall.

**HORSE CHESTNUT, OHIO BUCKEYE (Aesculus Glabra).** Hardy and desirable. In May it is covered with erect spikes of white flowers, and later with large brown nuts. Very ornamental all summer. See cut.



AMERICAN WHITE ELM



**KENTUCKY COFFEE TREE (*Gymnocladus Canadensis*).** A hardy ornamental tree with compound leaves, often two feet long, that present a tropical appearance.

**LOCUST, BLACK or YELLOW (*Robinia Pseudacacia*).** Flowers in long white racemes, very fragrant. Valuable for ornamental planting.

**LOCUST THORNLESS (*Gleditsia Triacanthus Inerinis*).** A variety of the Honey Locust, without the usual large branched spines.

**MAPLE, HARD (*Acer Saccharinum*).** A slow grower, fine foliage, stately form. Not adapted to dry, exposed locations.

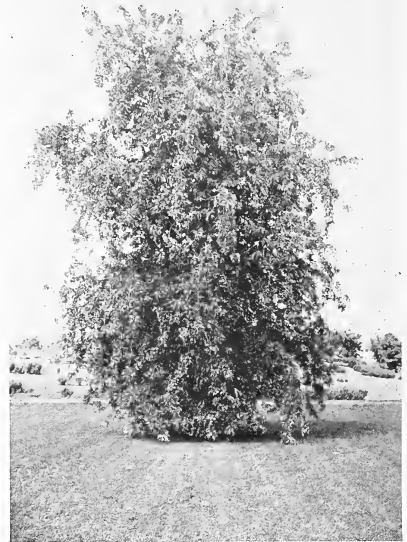
**MAPLE, NORWAY (*Acer Platanoides*).** An ornamental tree with long, dark green leaves. It will do well in protected locations.

**MAPLE, RED (*Acer Rubrum*).** Attractive at every season because of its excellent habit, earliness of the scarlet flowers, bright red fruits in late spring, and the beautiful foliage, which is green during spring and summer but turns scarlet or orange in autumn.

**MAPLE, SIBERIAN (*Acer Tataricum Ginnala*).** Of dwarf habit and compact form, with medium-sized or small leaves; makes a very pretty small tree. Brilliant crimson in autumn.

**MAPLE, SOFT or SILVER (*Acer Dasycarpum*).** A rapid grower, hardy and easily transplanted. Foliage green, healthy and attractive. One of the best to plant where immediate shade is wanted.

**MAPLE, WIER'S CUT-LEAVED (*Acer Dasycarpum Wierii*).** A variety of Silver Maple with deeply and delicately cut foliage, green above and silvery white beneath. The branches are slender and drooping, presenting a most interesting, attractive and graceful ap-



WEIR'S CUT LEAVED MAPLE

pearance. A pretty tree for the lawn and can also be used to good advantage for lining drives. Easily transplanted and of rapid growth. See cut.

**MOUNTAIN ASH, AMERICAN (*Sorbus Americana*).** Very hardy, but of slow growth.

**MOUNTAIN ASH, EUROPEAN (*Sorbus Aucuparia*).** A handsome and hardy tree covered with large clusters of white flowers in the spring, and later with bunches of red berries that hang on until winter. Choice ornamental tree.

**MOUNTAIN ASH, OAK-LEAVED (*Sorbus Quercifolia*).** A remarkably fine lawn tree with oak-shaped leaves.

**MOUNTAIN ASH, WEeping (*Sorbus Aucuparia Pendula*).** One of the finest of lawn trees, grows rapidly and is hardy. Branches should be pruned back severely each spring to make them droop evenly and thickly around the trunk.

**MULBERRY, RUSSIAN (*Morus Alba Tartarica*).** An ornamental tree with drooping branches; fruit resembles blackberries.

**MULBERRY, TEAS' WEeping (*Morus Tartarica Pendula*).** A weeping tree with an umbrella-shaped head and slender drooping branches. The leaves are glossy green and healthy. Plant in protected locations only.



LOMBARDY POPLARS MAY BE USED TO SCREEN OBJECTIONABLE VIEWS

*Plan to Plant Another Tree*



**POPLAR, BALSAM or BALM of GILEAD** (*Populus Balsamifera*). A remarkable rapid growing tree with luxuriant foliage.

**POPLAR, BOLLEANA** (*Populus Alba Bolleana*). A compact, upright grower. The leaves are dark green on the upper surface and snow white beneath. The bark is silvery gray. A neat tree, superior to Silver Poplar.

**POPLAR, CANADIAN**. A rapid growing poplar of recent introduction. This tree is especially valuable on account of its hardiness for planting on the prairies or other exposed places.

**POPLAR, CAROLINA** (*Populus Carolinensis*). A tree that is rapidly becoming popular. An erect, rapid grower, with large, bright green leaves. Valuable for street planting or for screens.

**POPLAR, LOMBARDY** (*Populus Fastigiata*). Often attains a height of one hundred feet. Hardy. Remarkable for its erect, close, columnar form. Indispensible in ornamental planting to break ordinary outlines of other trees, or to screen tall unsightly buildings. See cut.

**POPLAR, NORWAY**. One of the most rapid growing trees. Leaves are large and bright green.

**POPLAR, SILVER** (*Populus Alba*). Of rapid growth, spreading habit, hardy anywhere. Leaves glossy green above and silver white underneath. We have had many complaints in the past from customers ordering Silver Maple when they wanted a tree with silvery leaves. The underside of the Maple leaf is not white. The Silver Poplar is the best tree for silvery foliage.

**WALNUT, BLACK** (*Juglans nigra*). A native species of great size and majesty; bark very dark, deeply furrowed; foliage beautiful, each leaf being composed of from thirteen to seventeen leaflets; nut round.

**WILLOW, GOLDEN** (*Salix Vitellina Aurea*). Very hardy anywhere. A very rapid grower, making a large, handsome tree. Bark light golden yellow. We recommend planting this Willow on the prairies, on



HORSE CHESTNUT

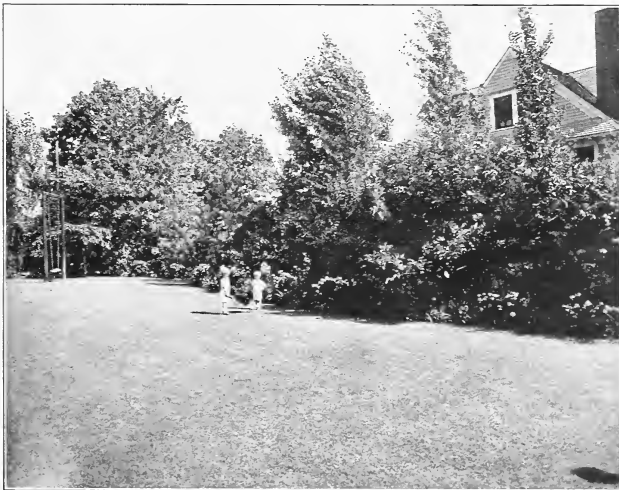
the most exposed places. It makes a good screen, windbreak or specimen tree.

**WILLOW, LAUREL-LEAVED** (*Salix Pentandra*). This is very ornamental, with large dark green leaves that shine as if varnished. Of close habit; a hardy rapid grower. It scarcely resembles a Willow.

**WILLOW, NIOBE**. A beautiful natural weeping tree with golden bark. A very attractive tree both winter and summer.

**WILLOW, WHITE** (*Salix Vitellina*). This is a well-known and well-tried Willow. It is desirable for shelter belts and exposed places. Rapid grower. One of the best trees for planting on the prairie.

**WILLOW, WISCONSIN WEEPING** (*Salix Dolorosa*). Naturally of a drooping habit. The best weeping willow for this climate. Perfectly hardy.



TREES SHOULD BE USED AS A PART OF THE SHRUBBERY PLANTING WHEN SCREENING OBJECTIONABLE VIEWS



## EVERGREENS

All nursery grown, several times transplanted. Furnished with an abundance of fibrous roots. Easily transplanted if care is taken not to expose roots to sun or wind.

**ARBOR VITAE, AMERICAN** (*Thuja Occidentalis*).  
A native Evergreen, valuable for ornamental planting.

**ARBOR VITAE, GLOBE** (*Thuja Globosa*). A dwarf and compact grower, naturally ball-like in form. Makes a desirable Evergreen for small entrance effects or for grouping with other varieties. Retains its bright green color well through the winter.

**ARBOR VITAE, PYRAMIDAL** (*Thuja Orientalis*,  
Var *Pyramidalis*). Of upright, pyramidal growth and compact habit.

**ARBOR VITAE, SIBERIAN** (*Thuja Siberica*). A superb variety with leafy full foliage and compact habit. Retains its green color well during winter.

**CEDAR, RED** (*Juniperus Virginiana*). A hardy native tree, valuable for screens, hedges or ornamental planting.

**FIR, BALSAM** (*Abies Balsamea*). A very regular symmetrical tree, assuming a pyramidal form even when young; foliage dark green.

**HEMLOCK** (*Tsuga Canadensis*). Dark green foliage, graceful in growth and succeeds well in shady, moist locations.

**JUNIPER, SAVIN** (*Juniperus Sabina*). A dwarf, spreading shrub, with trailing branches. Thrives in poorest soils. Very suitable for rockwork.

**PINE, MOUNTAIN or MUGHU** (*Pinus Mughus*).  
Perfectly hardy, dwarf Evergreen, ascending branches



EVERGREENS MAKE EFFECTIVE FOUNDATION PLANTINGS

densely clothed with bright green foliage; ornamental as single specimens or for covering rocky slopes. Useful for grouping at the base of tall growing varieties or for simple entrance effects. See cut.

**PINE, PONDEROSA**. A robust, rugged grower with long, glossy needles, often measuring six inches in length.

**PINE, SCOTCH** (*Pinus Sylvestrus*). Very hardy, rapid grower, easily transplanted. One of the hardest for shelter belts.

**PINE, WHITE** (*Pinus Strobus*). This variety is reliable if planted in protected locations.

**SPRUCE, BLACK HILL** (*Picea Canadensis*). A valuable compact growing tree with healthy dark green foliage. Easily transplanted. We recommend this variety as one of the best lawn trees.

**SPRUCE, COLORADO BLUE** (*Picea Pungens*). The most beautiful of all Evergreens. It is of beautiful, compact, symmetrical habit, with bluish-green leaves. See cut.

**SPRUCE, KOSTER'S COLORADO BLUE** (*Picea Pungens glauca Kosteriana*). The finest of all blue Evergreens. A rapid, vigorous grower with stiff, close branches; a brilliant, rich silvery blue foliage. Customers desiring the steel blue color in Colorado Blue Spruce should order this variety.

**SPRUCE, NORWAY** (*Picea Excelsa*). Very hardy. A rapid, fine grower. An elegant tree of pyramidal form and drooping habit. Very desirable for screens or shelter belts.

**SPRUCE, WHITE** (*Picea Alba*). A desirable, compact symmetrical Evergreen.



GROUP OF COLORADO BLUE SPRUCE

*Plant Evergreens for Winter Cheer*



# HARDY APPLES

We catalog nothing but such varieties of Apples and Crabs as have been well tried and have proven the most satisfactory in our Northern climate.

**ANISIM.** A valuable apple of Russian origin. Fruit of medium size, good flavored. A heavy bearer.

**DUCHESS OF OLDENBURG** (Russian). A well-known and highly esteemed variety. It bears young, regularly and abundantly, fruit of excellent quality. Of large size and beautifully colored; excellent for cooking, either green or ripe. Flavor, a sprightly sub-acid. Season, August to September.

**GOODHUE.** A large red, hardy apple of delicious until fully ripe. Season, October to January.

**HIBERNAL** (Russian). A perfect ironclad in constitution. The hardiest apple we know of. An early and regular bearer, very productive. The fruit is large and resembles the Duchess. Good for cooking. November to March.

**IOWA BEAUTY.** Strong, upright grower. Fruit large, good quality and a little later than the Duchess.

**LONGFIELD** (Russian). A young and regular bearer. Fruit of good quality, but rather small for market. November to February.



TRANSCENDENT CRABS



WEALTHY APPLE

**MALINDA.** Greenish yellow, medium size; a good eating apple. January to March.

**McMAHON'S WHITE.** Originated in Wisconsin. Fruit extra large, almost white; a fine cooking and eating apple. Season, December.

**MILWAUKEE.** A large, productive and good keeping variety. Tree hardy and a good grower. October to March.

**NORTHWESTERN GREENING.** Originated in Wisconsin. A fine, large, greenish yellow apple of good quality. Season, December to June.

**OKABENA.** Originated in Minnesota. Tree a fine grower, straight and symmetrical. Fruit medium size and good quality. Ripens shortly after the Duchess.

**PATTEN'S GREENING.** One of the best apples for the North, fully as hardy as the Duchess. Fruit large, green; flesh white, excellent for cooking and eating. November to January.

**PEERLESS.** Originated in Minnesota. Fruit medium size, yellowish green and stripes of carmine. Tree vigorous and straight. October to February.

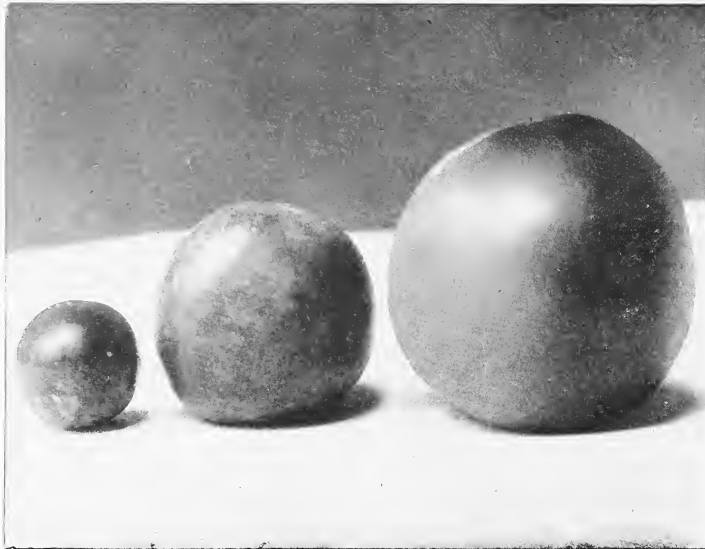
**RED WING.** The select long keeping apple of the famous Perkins Seedling orchard of Red Wing, Minnesota, which has swept the boards at the Minnesota State Fairs for years past, and taken the Wilder Medal at the meeting of the American Pomological Society at Boston, Mass. The fruit is superior in size, beauty, quality and keeping; and the tree a model of health, vigor and productiveness, having stood the test of Manitoba winters. October to April.

**WEALTHY.** Originated at Lake Minnetonka, Minnesota. Fruit of the very best quality. Tree vigorous, fruit large, regular, bright carmine striped on yellow ground. It bears when very young. A good market variety. October to February. See cut.

**WOLF RIVER.** Originated near Wolf River, Wisconsin. Fruit very large; greenish yellow, shaded with red. A hardy, strong-growing tree. December to January.

**YELLOW TRANSPARENT.** Medium, round, rather conical; skin yellow, almost transparent, flesh very crisp, sub-acid and of a good quality. A very excellent early market apple, especially valuable for culinary purposes. Inclined to blight. August.

*Read Our Planting Booklet*



WILD PLUM

AVERAGE TAME PLUM

LORING PRIZE PLUM

## Hardy Crab Apples

**EARLY STRAWBERRY.** The earliest crab. Beautiful, medium size and of good eating quality. Tree blights quite badly. Season, August.

**FLORENCE.** Large, light yellow streaked with red. A heavy, early bearer. No orchard should be without a few trees of this variety.

**HYSLOP.** A good winter crab. Fruit large, sub-acid. Tree hardy but somewhat subject to blight. November to February.

**TRANSCENDENT.** A tree well known for hardiness and productiveness. A very rapid grower. It occasionally blights. Flesh yellow, crisp and of excellent flavor. September to October. See cut.

**VIRGINIA.** A fine grower, free from blight. Fruit size of Transcendent, color red. A good home and market variety. September to October.

**WHITNEY NO. 20.** Very hardy, productive, handsome in foliage. A dessert apple of good quality. Color red, flesh juicy, tender and rich. Comes into bearing very early. Season, September.

## PLUMS

**LORING PRIZE PLUM.** This is the largest and best plum known for Northern planters—Because—it is a good commercial fruit, is good for canning, delicious to eat, has a small pit, is of a bright attractive color and is bound to be in great demand at a good price. The tree is an annual bearer, an upright and rapid grower. Size of fruit one and three-quarter to two and

one-quarter inches in diameter. Its flavor when ripe is beyond description. It is deliciously sweet and mild in acidity. The flesh is firm, melting in the mouth like a pear. It is superior to the large red California plum that is found in fruit stores.

Tree and fruit have successfully passed the rigid conditions required to secure the One Hundred Dollar prize offered by C. M. Loring, and is the only variety that has ever received the unanimous award of the committee appointed to judge its merits. There is satisfaction and money in growing such a tree. See cut.

**DE SOTO.** Fruit large, almost red, flesh solid, rich, juicy and sweet. The most reliable plum. Profitable for the market. It is inclined to overbear. The ground should be well manured when they come into bearing.

**ELLIOT.** A strong grower, hardy and heavy bearer. Fruit of good size, pit small, quality good.

**FOREST GARDEN.** Fruit large, oblong, red and yellow. Highly flavored. Ripens early.

**MONITOR.** A promising new variety. Tree vigorous and productive. Fruit large, almost round, color dark red, quality good.

**SURPRISE.** A highly esteemed variety. Fruit large and of good quality.

**TERRY.** One of the largest and best hardy plums. Fruit unusually large, red, quite firm and of good flavor.

**UNDERWOOD (Minnesota No. 91).** One of the new, hardy plums originated at the Fruit Breeding Farm near Excelsior. Fruit attractive red with fairly firm juicy flesh, small pit, clingstone, hangs well and ripens over a long period. A very promising variety and should be given a trial.





**WOLF.** Fruit large, perfect freestone, small pit. A good grower and very productive. August.

**COMPASS CHERRY-PLUM.** Originated in Minnesota. The fruit resembles the plum but has a cherry flavor. Tree bears the second year after planting, and is perfectly hardy anywhere. The fruit is very fine for cooking or canning.

**PROFESSOR HANSEN'S HYBRID PLUMS**

**HANSKA.** This is a rapid grower. The fruit is splendid for eating out of hand and when cooked retains the apricot flavor. When ripe the fruit is a bright red with a heavy bloom, flesh is firm, yellow and of good quality.

**OPATA.** A cross between the Sand Cherry and the Gold Plum. The tree bears exceedingly early, often loaded with fruit the year following planting. The fruit is purple, the flesh is green, flavor very pleasant, combining the spicy acids of the Sand Cherry with the rich sweetness of the Gold Plum. Ripens during the latter part of July.

**SAPA.** We have had many trees three years old in the nursery rows bear over one-half bushel of fine luscious fruit. The fruit is of a dark purple color, being the same color through to the pit. It is very fine for eating from the tree and is unexcelled for canning. Trees planted this season will be full next year. Ripens early.

**WANETA.** One of the best of Prof. Hansen's hybrids. Fruit red, two inches in diameter, weighing two ounces, thin-skinned and of a sweet, delicious flavor.

**Cherries**

**EARLY RICHMOND.** Red, acid, excellent for cooking or drying. Tree a free grower and productive. June.

**HOMER.** Of the few varieties of cherries which succeed in Minnesota, the Homer seems to give the best satisfaction. The leading cherry grower of Minnesota says: "The Homer cherry is the earliest and the most prolific bearer and the largest and sweetest of anything grown in the West, and from my experience of forty years is most cordially recommended for general trial."

**WRAGG.** Dark purple, extra fine quality, hardy and productive. July.

**ROCKY MOUNTAIN DWARF CHERRY.** A dwarf cherry growing about four feet high. Fruit of fair size, and an early bearer.

**ZUMBRA.** Introduced by the Minnesota State Fruit Breeding Farm. An early bearing and extremely productive variety. Will bear a heavy crop the year after setting. Fruit very dark nearly black, flesh firm, greenish sometimes tinged with red when fully ripe. Ripens about the middle of August.

**Currants**

**CHERRY.** Large, deep red, rather acid; bunches short; plants erect, stout, vigorous and productive.

**FAY'S PROLIFIC.** Plant of spreading habit. One of

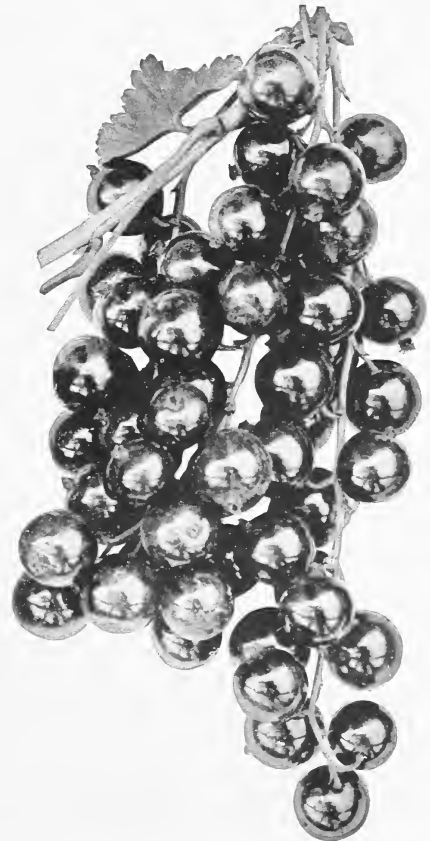
the largest red currants grown. Very prolific and easy to pick. Color red, flavor superior to Red Dutch. Not quite hardy in the Far North.

**LONDON MARKET.** For many years this variety has been fruiting and is now regarded as the best market variety. Plant is extremely vigorous, with perfect foliage which it retains through the season; an enormous cropper. Ripens with Victoria, is larger in both bunch and berry, a better bearer. For any use—home, garden or market—one of the best.

**NORTH STAR.** Strongest growers among the red varieties; should be given plenty of room and the ground kept well enriched. Bunches average four inches in length and are freely produced. Hardy, vigorous, productive; extra quality.

**PERFECTION.** In color it is a beautiful bright red and of size larger than the Fay's Prolific, the clusters average larger and the size of the berries is maintained to the end of the bunch. See cut.

**POMONA.** Of good size; beautiful, clear, bright, almost transparent, red; sweet and good, has but few and small seeds; is easily picked; hangs a long time after ripe, and is one of the best to hold up in shipping or on the market. A vigorous grower, healthy and hardy; most productive; continues long in profitable bearing; retains its foliage; hangs on bush in good condition; comes into bearing early.



PERFECTION CURRANT



**PRINCE ALBERT.** A late ripening variety, very profitable for market.

**RED DUTCH.** An old, well-known variety. Very productive, medium size, bright red, long bunches. Ripens early, good quality. Profitable.

**STEWART'S SEEDLING.** Beautiful light red fruit of large size and good quality. Bush a strong and healthy grower. One of the best sorts.

**WHITE GRAPE.** The best white. Large, mild flavored, good for table.

## Gooseberries

**CARRIE.** When young, the Carrie has a vigorous, erect, upright growth, and as it begins to bear heavily its branches take on a spreading form. The foliage is abundant, the leaves plentiful, large, thick and glossy on the upper side; the fruit is smooth and oval in shape. The fruit is a transparent green, turning to a rich wine or deep maroon color when fully ripe; is pleasant sub-acid, most excellent flavor, the skin tender, the flesh fine-grained and meaty. Good sized specimens are three-fourths of an inch in diameter. It produces from one to five berries for each fruiting bud. This increased number of berries to a cluster gives the Carrie gooseberry greater efficiency in producing abundant crops of fruit than other varieties that bear only one or more berries in a cluster.

**DOWNING.** Greenish white, large, oval, hardy, healthy and productive.

**HOUGHTON.** Fruit pale red, medium size, roundish oval, sweet and very productive. The hardiest of well tried varieties.

**PEARL.** A robust grower, free from mildew and very productive. Fruit of excellent quality and resembles the Downing, but is larger. A very heavy bearer.

**RED JACKET or JOSSELYN.** An American seedling. Fruit of very large size, smooth, red and of the best quality. Plant vigorous, hardy and prolific. Its great point of value is that it has not mildewed. Best for general planting.



LATHAM RASPBERRIES

## Raspberries

**COLUMBIAN.** Good for canning, retaining to a large extent its form, color and flavor. Not perfectly hardy unless given good winter protection.

**GOLDEN QUEEN.** A large yellow raspberry of good quality. The berries are about the size of the King.

**GREGG.** Late, very large, firm and of fine flavor, not quite as hardy as Ohio. A popular market sort.

**KING.** Plant a strong grower, very hardy and productive. Berry is firm, a good shipper; large size; beautiful bright scarlet color; ripens with the earliest.

**LATHAM (Minnesota No. 4).** Introduced by the Minnesota Fruit Breeding Station. It is by far the most popular variety grown, both for market and the home garden. The bush is healthy, vigorous and hardy without winter protection; bears a heavy crop of extra large fruit of the best quality. The largest and best variety for canning.



RED JACKET GOOSEBERRIES



**LOUDON.** Originated in Wisconsin. Berries red, large, firm and late. Plant hardy, vigorous and productive. A good shipper. Will stand without winter protection, except in very trying locations.

**MILLER.** A popular market variety, and one of the earliest to ripen. The bush is hardy even without covering. Fruit bright red and of good quality.

**MINNETONKA IRONCLAD.** The berries are large, rich crimson color, firm and of excellent quality. It does not go to pieces in canning, but retains its color, form and flavor. The bush is healthy and vigorous, and yields enormous crops of berries.

**OHIO.** Berry early, medium size, bright color, firm and of good quality.

**ST. REGIS EVERBEARING.** Fruit commences to ripen with the earliest and continuing on young canes until October. Berries bright crimson, large size, rich, sugary, with full raspberry flavor. Flesh firm and meaty.

**SUNBEAM.** A variety introduced by Prof. N. E. Hanson of the South Dakota State Experiment Station at Brookings. Prof. Hanson does not claim this new variety to be larger or of better quality than some other kinds, but claims it will stand without protection on the prairies of Dakota. Those who have tried growing raspberries on the exposed prairie know how difficult it is and will be glad to learn of this variety.

## Blackberries

**ANCIENT BRITON.** A popular market variety. The fruit is of fine quality and produced in great abundance.

**LUCRETIA.** This is one of the low-growing, trailing blackberries. Should be mulched to keep the berries off the ground. Fruit large and rich. The earliest blackberry.

**SNYDER.** A well-known and popular variety. One of the best for the far North. Early, sweet, juicy. A valuable market variety.

## Grapes

The Alpha, Beta and Hungarian varieties are hardy without winter protection. All other varieties should be covered for the winter.

## Asparagus

**CONOVER'S COLOSSAL.** Very large, tender and early. The best asparagus. A standard market variety.

**COLUMBIAN MAMMOTH WHITE.** This variety is of excellent quality, produces shoots that are very white, and will remain so as long as they are fit to use.

## Rhubarb or Pie Plant

**LINNEAUS.** A rhubarb of fine quality. The stalks are not as large as the Victoria.

**VICTORIA.** Very large, early, fine quality, tender. Productive and vigorous grower. The best market variety.



BETA GRAPES

**ALPHA.** Considered by some to be superior to the Beta. Fruit is large and of good quality. Perfectly hardy without covering.

**BETA.** Grape growing in this section has been sadly neglected because varieties offered by nurserymen were not hardy without covering. The Beta is perfectly hardy, a rapid grower, early bearer, good sized fruit, bunches often weighing one half to one pound each and of fair quality. Color and appearance about same as Concord. Well adapted for covering porches, fences, etc., or will do well planted out by itself. The best grape for jelly or grape juice. See cut.

**HUNGARIAN.** One of the promising new hardy grapes. Fruit is of fair size and quality good.

**AGAWAM.** Dark red, bunch and berries very large. Ripens about with Concord.

**CAMPBELL'S EARLY.** The berries are larger than Concord, nearly round, flesh rather firm but tender; has very few seeds; quality rich and sweet. Plant is healthy and vigorous; it ripens early.

**CONCORD.** A well-known black grape, medium size, early and of fair quality. Vine hardy, healthy and productive.

**DELAWARE.** Light red, bunches and berries small to medium size. Requires strong soil and good culture.

**MOORE'S EARLY.** Black, earlier and larger than Concord, but not as productive.

**POCKLINGTON.** White, bunch and berries large. Ripens about with Concord.

**WORDEN.** Bunch and berries large; ripens before Concord. Vine vigorous, hardy and productive.



# STRAWBERRIES

## EVERBEARING STRAWBERRIES

Fresh, ripe strawberries in autumn are a novelty, but you can grow them in your garden in the fall, just as well as in June.

Our Everbearing Strawberries will produce a nice crop of large, beautiful berries for you during August, September and October. The quality of this fruit is first class, too—berries are smooth and dark, glossy red in color; flavor is far above the average found in June-bearing strawberries.

A dish of nice strawberries with cream is mighty good to eat at any time, but served at that time of year is a treat your guests will appreciate and remember. The expense for plants is very small—one or two hundred plants will produce enough berries for your family, guests and some for the neighbors.

**PROGRESSIVE.** The best Everbearing strawberry. The fruit is of good size, fine flavor, smooth of good color and appearance. The plants are vigorous and very productive. Plants set out in April or May will begin bearing in July and continue until November. See cut.

**SUPERB.** The fruit is large, round, rich dark color, glossy and attractive. The berries are larger than Progressive, but does not yield as heavily. It is well worthy of a trial.

**DULUTH.** Formerly called No. 1017. This Everbearing strawberry was originated by Chas. Haralson, superintendent Plant Breeding Station. Plant vigorous, fruit large and of good quality. Ripens one to two weeks later than Progressive.

## JUNE-BEARING STRAWBERRIES

Varieties marked (P) have imperfect flowers and must be planted near those having perfect flowers marked (S).

**BEDERWOOD (S).** Large, early, bright red, good quality. Vigorous, healthy and productive; a good fertilizer. One of the best for home use and near market.

**CRESCENT (P).** Medium size, bright, light scarlet, very productive, strong grower. A good shipper.

**HAVERLAND (P).** Large, bright red, excellent flavor. Plant vigorous and healthy. A good variety for home use and near market.

**MINNESOTA.** Formerly known as No. 3 (S). Originated at the Plant Breeding Station near Excelsior, Minnesota. Plant is vigorous, deep rooted and hardy. Fruit large and of good quality.

**SENATOR DUNLAP (S).** This is the leading strawberry throughout the United States. It does well



PROGRESSIVE EVERBEARING STRAWBERRIES

everywhere and produces enormous crops of fruit regularly. Senator Dunlap has perfect blossom, bearing a good crop planted alone; is hardy, productive, a splendid keeper and able to hold its own under any "rough and tumble" methods of culture to which it is likely to be subjected. Senator Dunlap is a very heavy bearer of good size, evenly shaped fruit of a very beautiful dark red color, and its flavor is delicious. For canning it is fine, making a rich, red syrup. It is a first class shipper and retains its brightness long after being picked. It always looks well on the market and sells quickly at top prices. The best proof we have that this berry is a big money maker everywhere is the fact that our customers in nearly every state in the

Union are ordering Senator Dunlap in large quantities every year, often planting several acres solid to this variety. We cannot well recommend Senator Dunlap too highly, as we guarantee it to please you in every way. The sale of the Senator Dunlap is wonderful. See cut.

**SPLENDID (S).** Large, bright red, firm, excellent flavor. Plant healthy, vigorous, fruitful; succeeds everywhere strawberries can be grown. Most profitable for market.

**WARFIELD (P).** Fair size, dark red, firm and early. Plant healthy, strong grower, fruitful. Resists drought well. Excellent variety to ship.

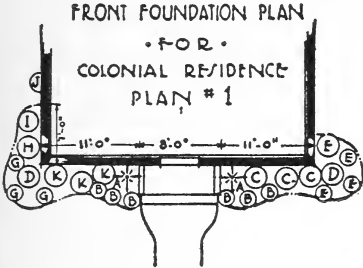


SENATOR DUNLAP

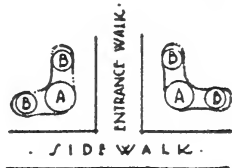
# TYPICAL PLANTING PROBLEMS.

PREPARED BY ROSE HILL NURSERY • H. G. LOFTUS • LANDSCAPE ARCHITECT.  
WE OFFER THESE PLANS TO OUR CUSTOMERS. PLANS MAY BE MODIFIED TO FIT INDIVIDUAL NEEDS.

## • SHRUBS USED FOR PLAN #1



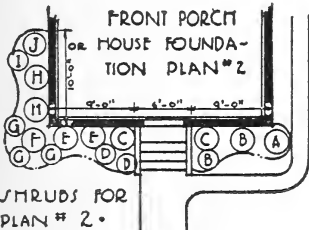
KEY-NO.	VARIETY	SIZE
A 2	AMERICAN ARBOR VITAE	3-4 FT.
B 6	JAPANESE BARBERRY	18-24 IN.
C 3	LEMOINE SYRINGEA	3-4 FT.
D 2	SPIREA (BRIDAL WREATH)	3-4 "
E 3	HILLS OF SNOW HYDRANGEA	2-3 "
F 3	DOUBLE FLOWERING PLUM	3-4 "
G 1	HARDY HYDRANGEA	2-3 "
H 1	NIGHT BUSH CRANBERRY	3-4 "
I 1	MOCK ORANGE SYRINGA	3-4 "
J 1	ENGLEMANS IVY	3-4 "
K 3	COTONEASTER	3-4 "



ENTRANCE WALK PLANTING  
PLAN # 4.

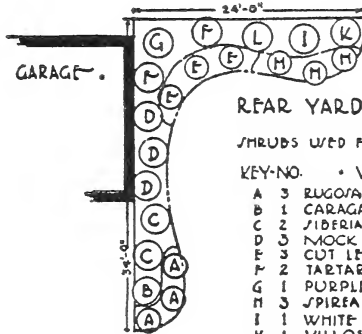
## SHRUBS.

KEY NO.	VARIETY	SIZE
A 2	ROSA RUGOSA DBL. RED	2-3 FT.
D 1	JAPANESE BARBERRY	B-24 IN.



SHRUBS FOR  
PLAN # 2.

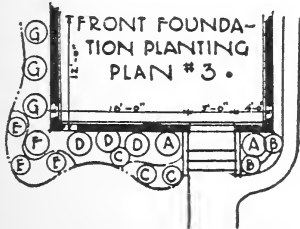
KEY-NO.	VARIETY	SIZE
A 1	LEMOINE SYRINGEA	3-4 FT.
B 2	SNOW BERRY	2-3 "
C 2	SPIREA (BRIDAL WREATH)	3-4 "
D 2	JAPANESE BARBERRY	18-24 IN.
F 2	ROSA RUGOSA DBL. RED	2-3 FT.
F 1	PERSIAN LILAC	4-5 FT.
G 3	HILLS OF SNOW HYDRANGEA	2-3 FT.
M 2	ASH LEAVED SPIREA	3-4 FT.
I 1	MORROWS HONEYUCKLE	4-5 FT.
J 1	LARGE FLOWERED SYRINGEA	3-4 "



REAR YARD CORNER PLANTING  
PLAN # 3

## SHRUBS USED FOR PLAN #3

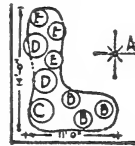
KEY-NO.	VARIETY	SIZE
A 3	RUGOSA ROSE SINGLE	2-3 FT.
B 1	CARAGANA PEA TREE	4-5 "
C 2	SIBERIAN DOGWOOD	3-4 "
D 3	MOCK ORANGE SYRINGA	3-4 "
E 3	CUT LEAF ELDER	3-4 "
F 2	TARTARIAN HONEYUCKLE	3-4 "
G 1	PURPLE LILAC	4-5 "
H 3	SPIREA (BRIDAL WREATH)	3-4 "
I 1	WHITE LILAC	3-4 "
K 1	VILLOSA LILAC	4-5 "
L 1	PRESIDENT GREY LILAC	3-4 "



SHRUBS USED FOR  
PLAN # 3

KEY-NO.	VARIETY	SIZE
A 2	LEMOINE SYRINGEA	3-4 FT.
D 2	DWARF SPIREA-FROEBELI	18-24 IN.
C 3	JAPANESE BARBERRY	18-24 "
D 3	ARGUTA SPIREA	3-4 FT.
F 3	HARDY HYDRANGEA	2-3 "
F 1	FLOWERING PLUM	3-4 "
G 3	SPIREA (BRIDAL WREATH)	3-4 "

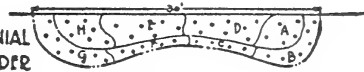
## A LOT CORNER PLANTING PLAN # 6



## SHRUBS USED FOR PLAN # 6

KEY NO.	VARIETY	SIZE
A 1	COLORADO BLUE SPRUCE	3-4 FT.
B 3	JAPANESE BARBERRY	18-24 IN.
C 1	CARAGANA PEA TREE	4-5 FT.
D 2	SPIREA VAN HOUTTE	3-4 "
E 3	HILLS OF SNOW HYDRANGEA	2-3 "

MARDY PERENNIAL  
FLOWER BORDER  
PLAN # 7



PERENNIALS USED IN PLAN # 7.

KEY NO.	VARIETY
A 3	ASTEE NOVY ANGLARA
B 6	SHASTA DAISY
C 4	COLUMBINES
D 3	LARKSPUR
F 6	HOLLY HOCKS
F 3	GAILLARDIA
H 1	IRIS
G 6	HARDY PHLOX

*Our Fiftieth Anniversary Number*  
marking the close of a half  
century of painstaking ser-  
vice, and the beginning of an  
even broader and likewise  
conscientious service to you  
and our patrons of the future.



ROSE HILL  
NURSERY

MINNEAPOLIS ST. PAUL